

ECG interpretation №245960*

from 28.04.2020 15:02:46, duration 133 sec.

device ECG Dongle Full, cardio-cloud.ru



HEALTHLINE
innovate life quality

Problems revealed: 2

Dangerous: 0

Important: 2

Dangerous	computer check	doctor check
Atrial fibrillation	Not revealed	Not revealed
Atrial flutter	Not revealed	Not revealed
Supraventricular tachycardia	Not revealed	Not revealed
It is impossible to rule out myocardial infarction	Not revealed	Not revealed
Important		
Short PR interval	Not revealed	Not revealed
Wolff-Parkinson-White syndrome	Not revealed	Not revealed
First-degree atrioventricular block	Not revealed	Not revealed
Bundle branch block	Not revealed	Not revealed
Prolongation of the QT interval	Not revealed	Not revealed
Second-degree type 1 atrioventricular block	Not revealed	Not revealed
Second-degree type 2 atrioventricular block	Not revealed	Not revealed
Shortening of the QT interval	Not revealed	Not revealed
Sinoatrial block	Not revealed	Not revealed
Sinus arrhythmia	Revealed	Revealed
Sinus bradycardia	Revealed	Revealed
Sinus tachycardia	Not revealed	Not revealed
Premature supraventricular contraction	Not revealed	Not revealed
Third-degree or complete atrioventricular block	Not checked	Not revealed
Premature ventricular contraction	Not revealed	Not revealed
Signs of left ventricular hypertrophy	Not revealed	Not revealed
Signs of right ventricular hypertrophy	Not revealed	Not revealed
Moderate changes in the myocardium	Not revealed	Not revealed
Significant changes in the myocardium	Not revealed	Not revealed
It is impossible to rule out myocardium focal changes	Not revealed	Not revealed
Signs of benign early repolarisation	Not revealed	Not revealed

Age: 18 years

Sex: female

Weight: 65 kg

Height: 180 cm

Body mass index (BMI): 20

Normal (healthy weight)

Cardiac pacemaker location:
sinus rhythm

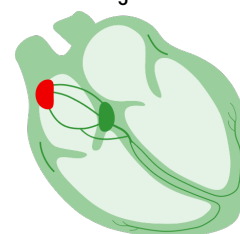
Heart rate 52 bpm



Stress-Index 13



Index of activity of the regulatory systems



For doctor

Electrical axis	82°
P	98 ms
PR (PQ)	168 ms
QRS	86 ms
QT	437 ms
QTc	417 ms

Conclusion of doctor

it is recommended to consult a cardiologist for further examination and also to repeat the measurement once a month or if you feel unwell

Comments on pathologies

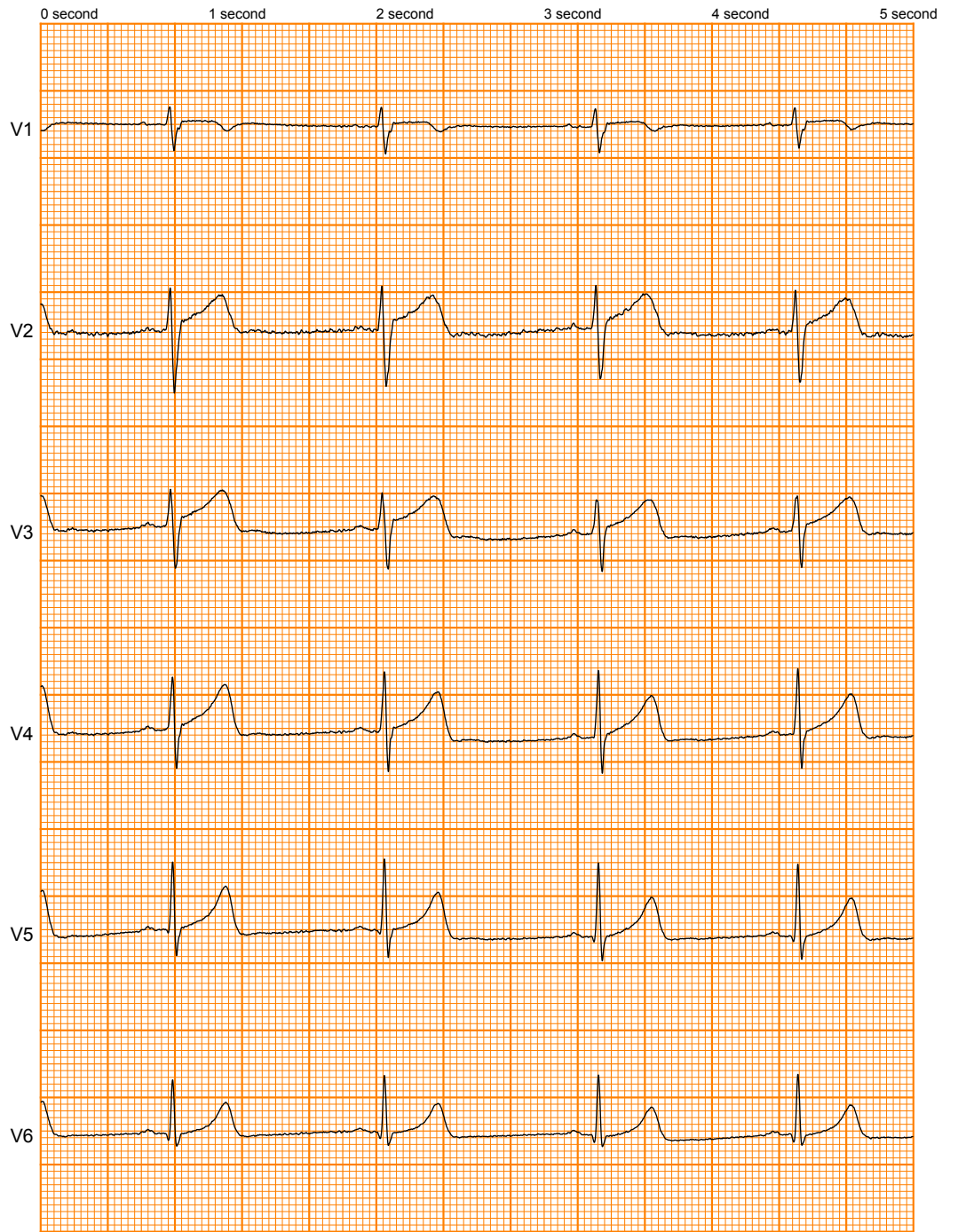
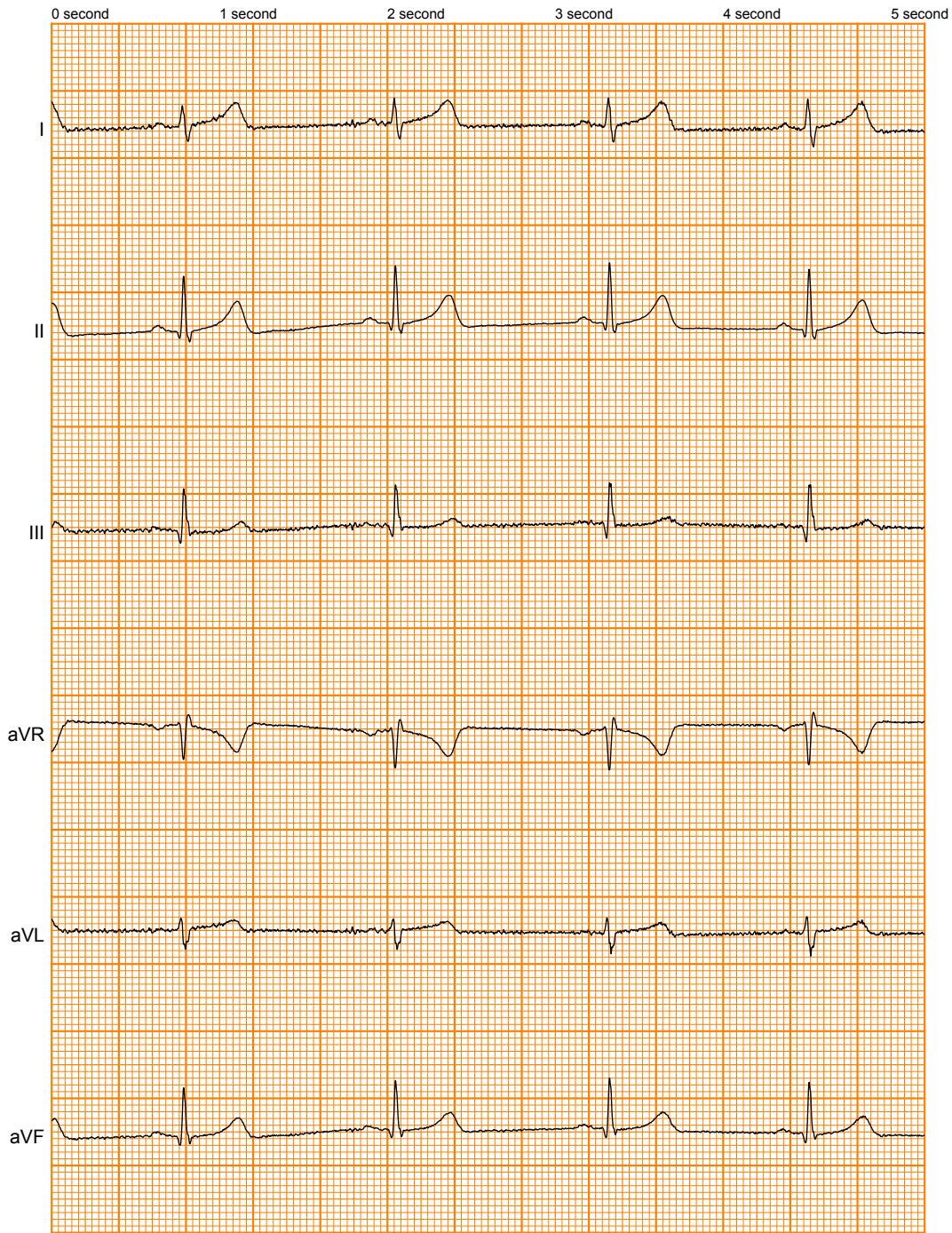
Sinus arrhythmia in itself is not a pathology, it occurs in all people and often in children. Severe sinus arrhythmia may be accompanied by a feeling of a sinking heart, general weakness, shortness of breath at rest. When a panic attack, pain in the chest, emotionally unstable state, trembling, feeling of lack of air appear, consult a doctor.

Sinus bradycardia - a decrease in heart rate to 30–59 beats per minute. Reduction of the heart from 50 to 60 times per minute may be accompanied by general weakness and malaise. And it may be a variant of the norm among trained people and athletes. Severe bradycardia (less than 50 beats / min) causes impaired blood circulation. The frequency of contractions of less than 40 beats / min may signal a threatening cardiac arrest, circulatory insufficiency occurs. Without timely medical care, the risk of fainting, coronary disease and even cardiac arrest increases. For the prevention of the disease, it is necessary to control the heart rate, blood pressure, stop smoking and drinking alcohol, follow a diet, and undergo an annual examination by a cardiologist.

Doctor: Григорьева Елена Сергеевна

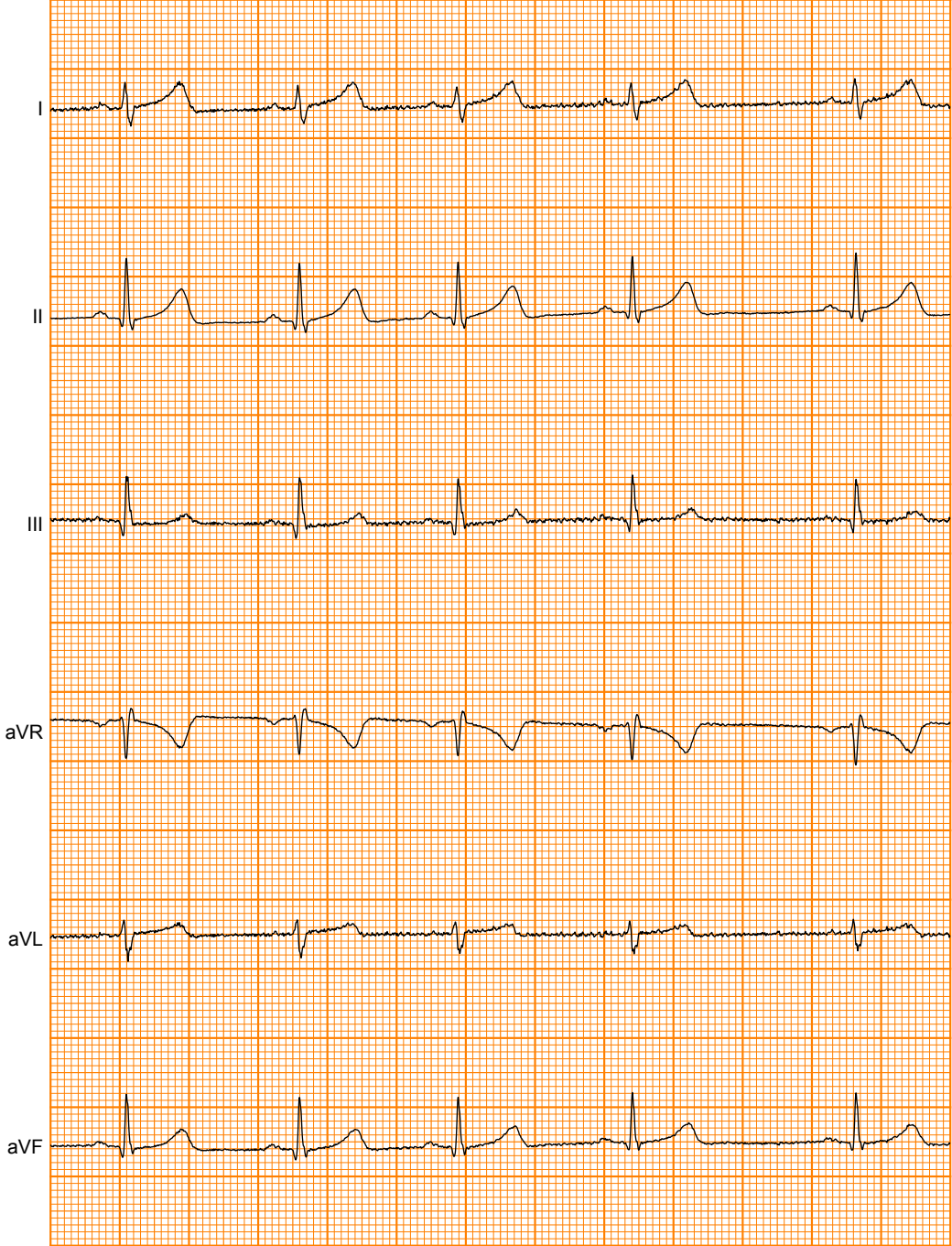
Company: ИП Григорьева Е.С.

Nordavind Group, +7 (499) 130-98-92, info@cardio-cloud.ru * it is not medical report based on the submitted biomedical information



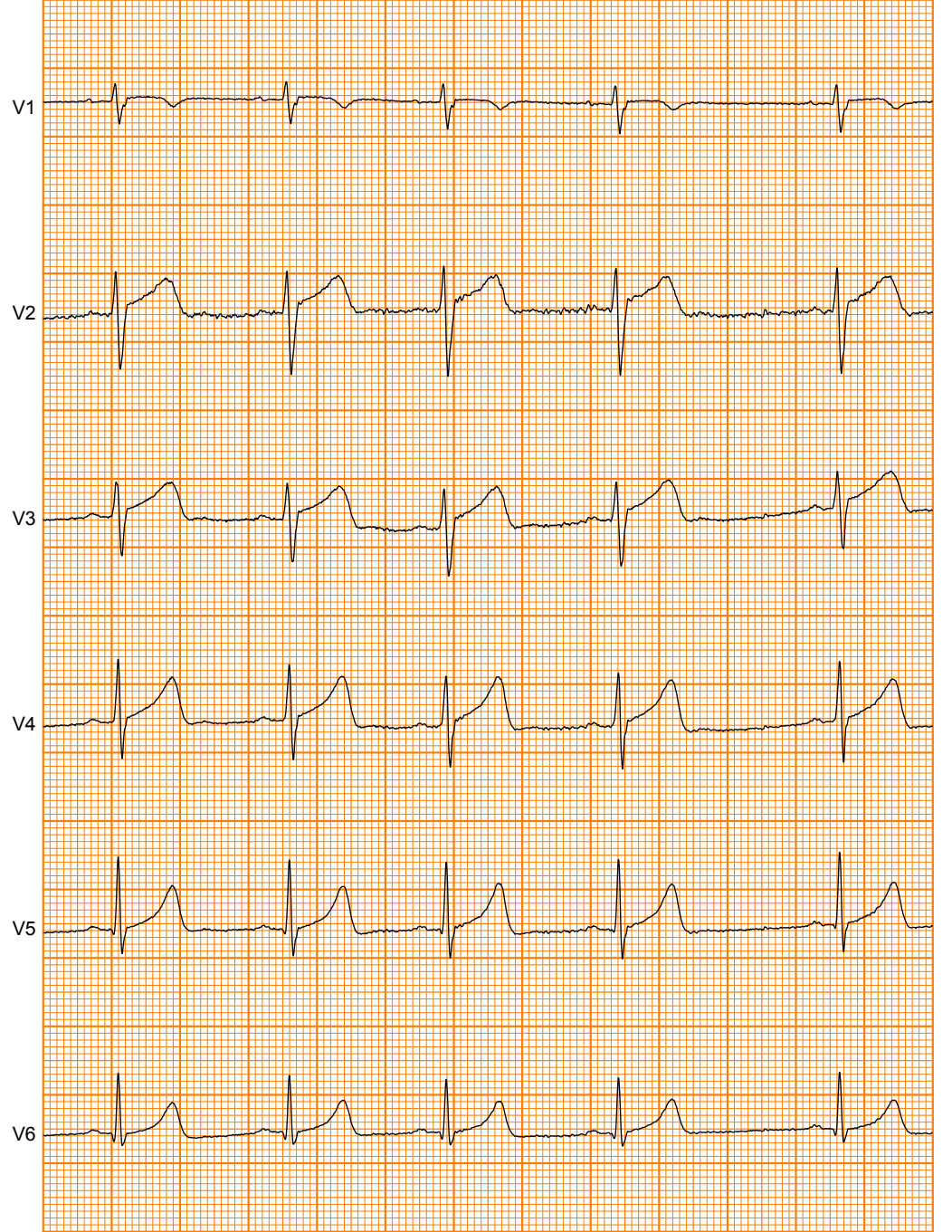
25mm/s 5mm/mV №245960

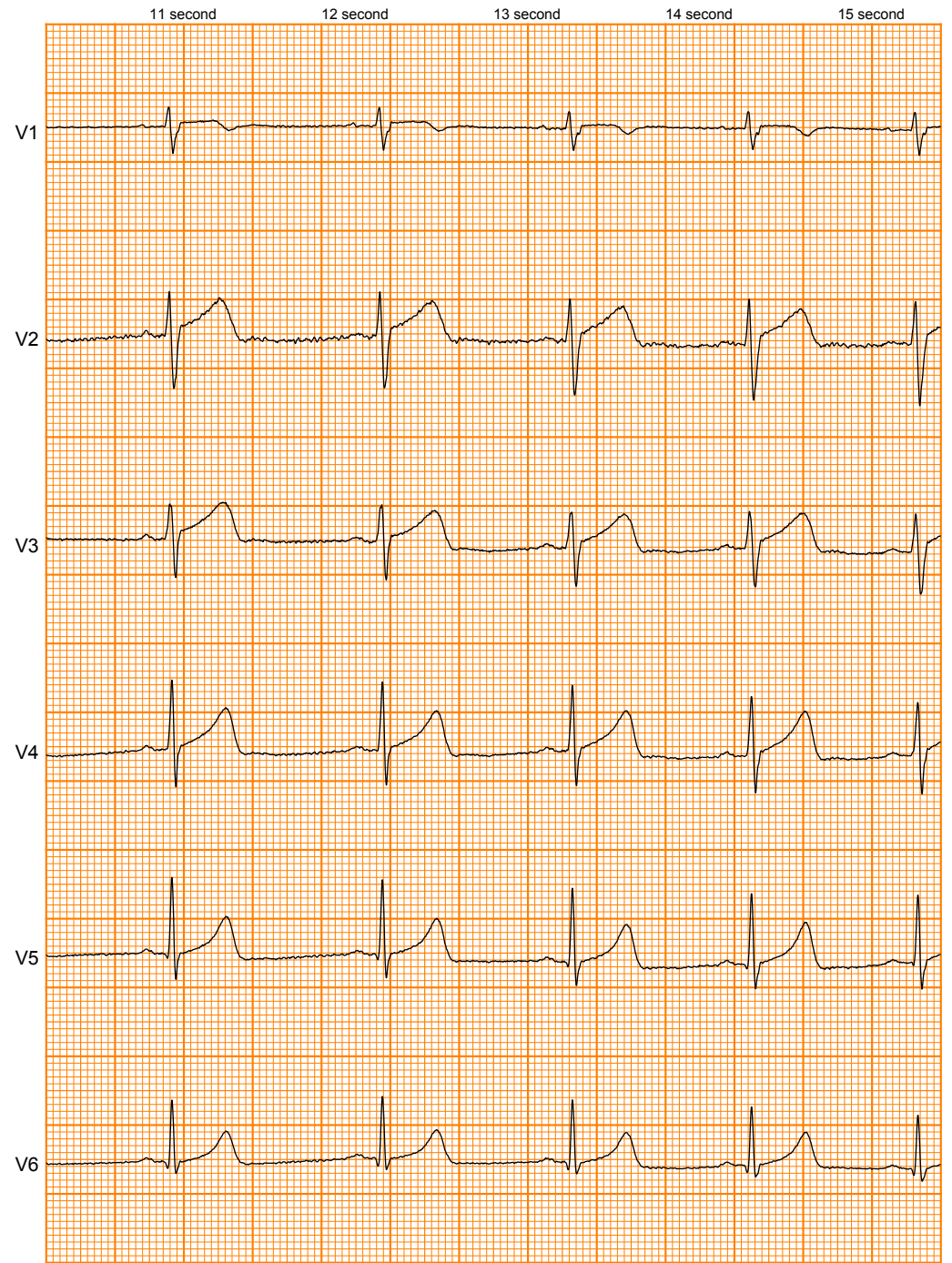
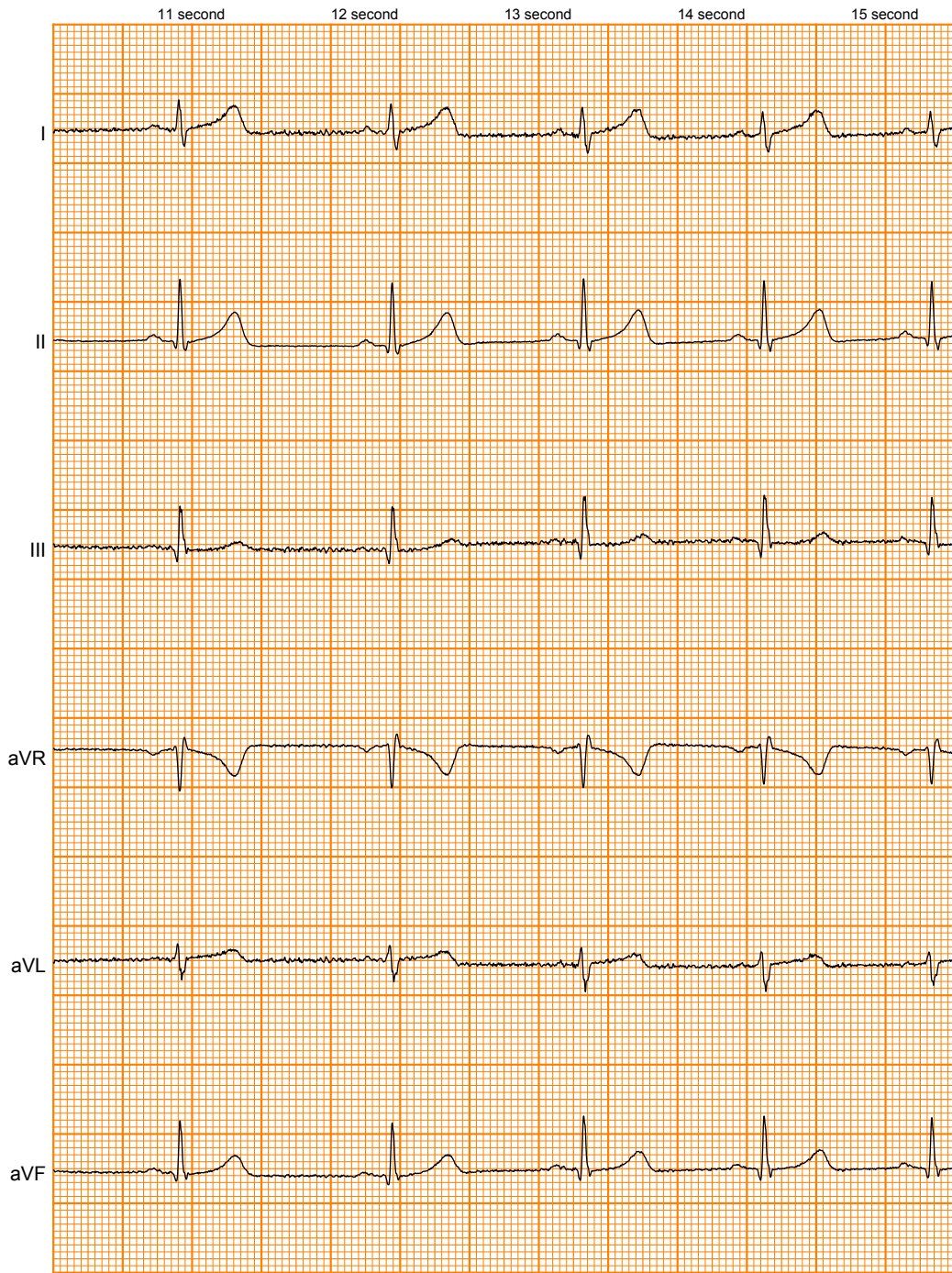
6 second 7 second 8 second 9 second 10 second



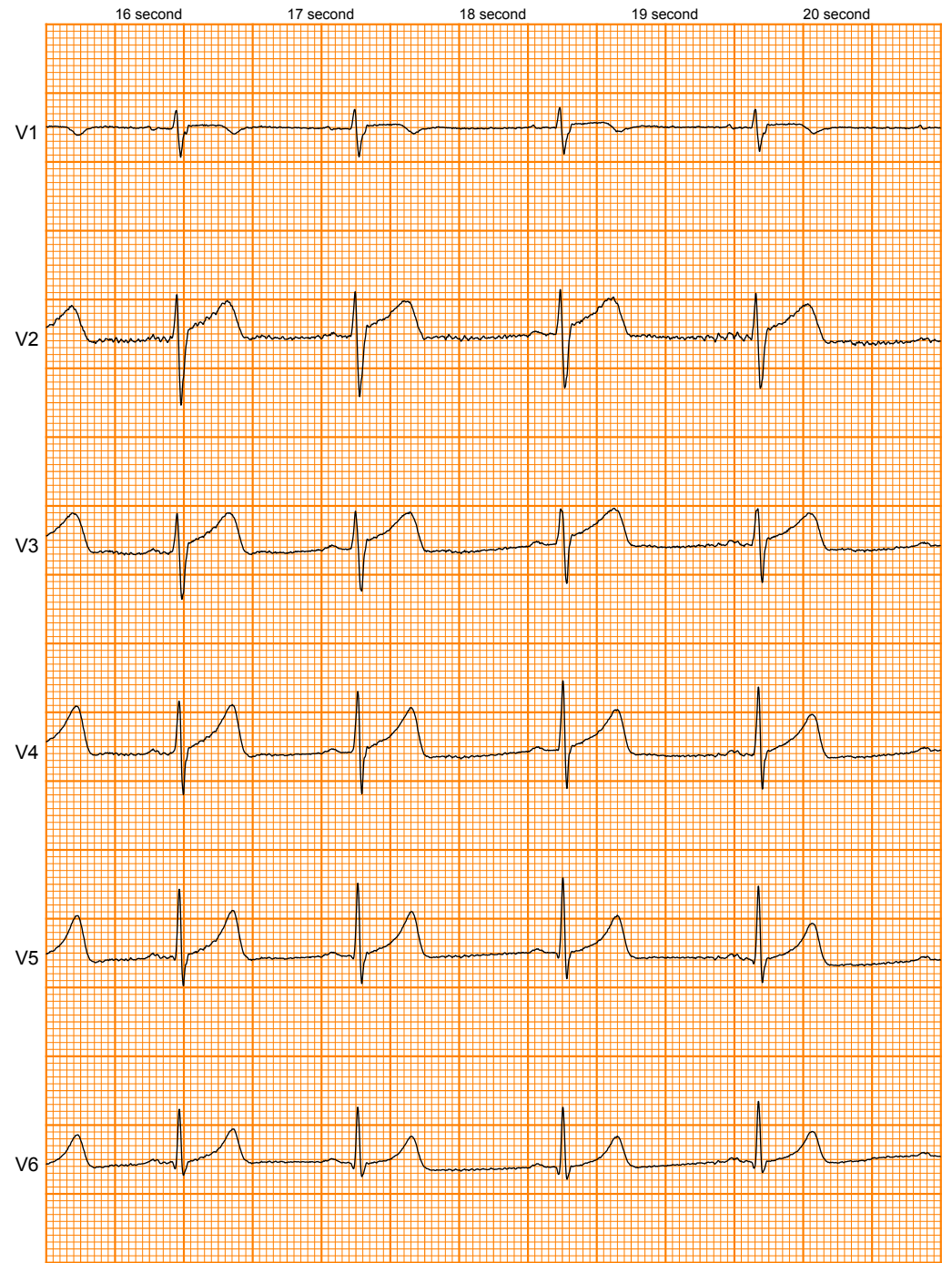
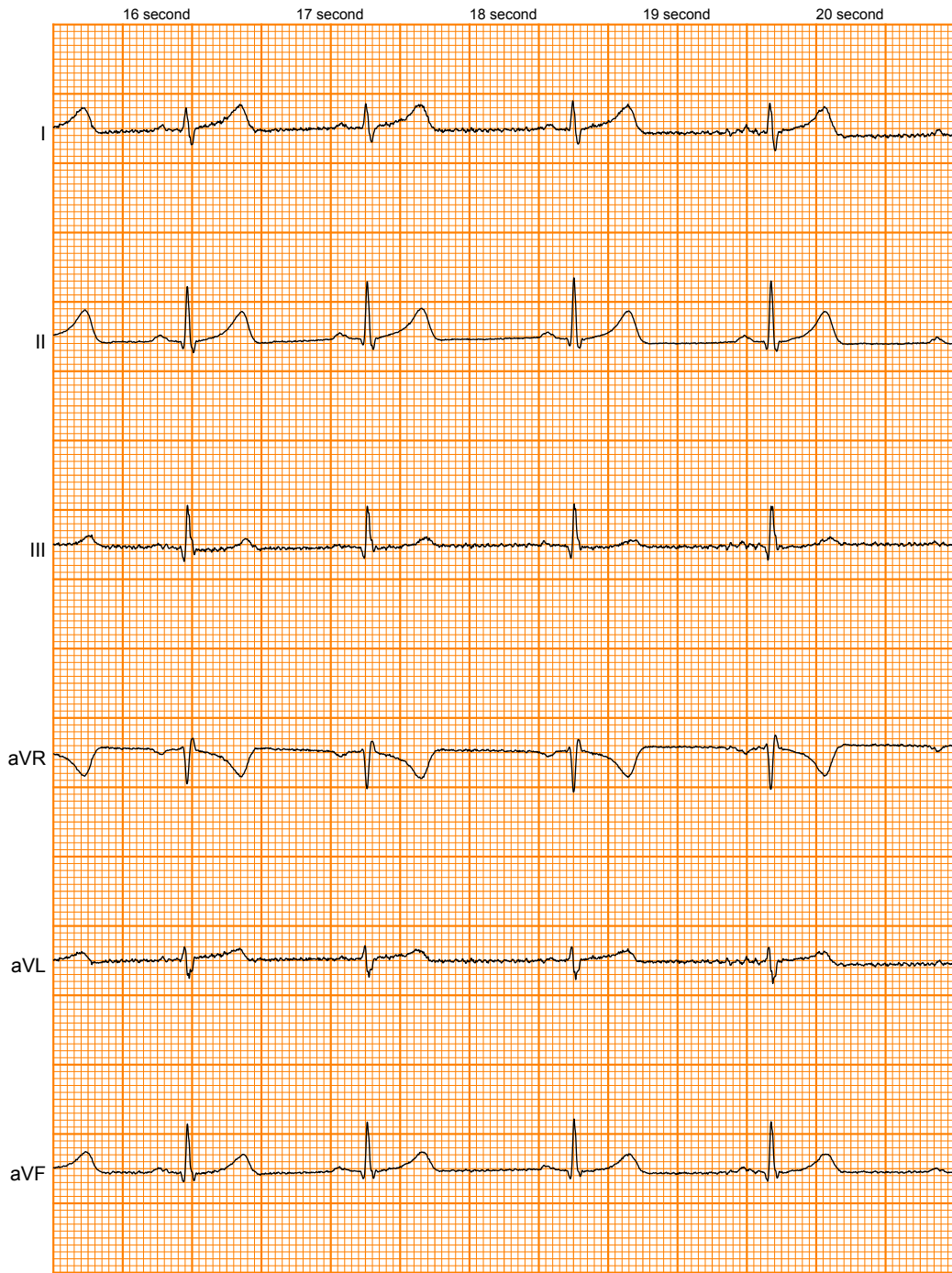
25mm/s 5mm/mV №245960

6 second 7 second 8 second 9 second 10 second

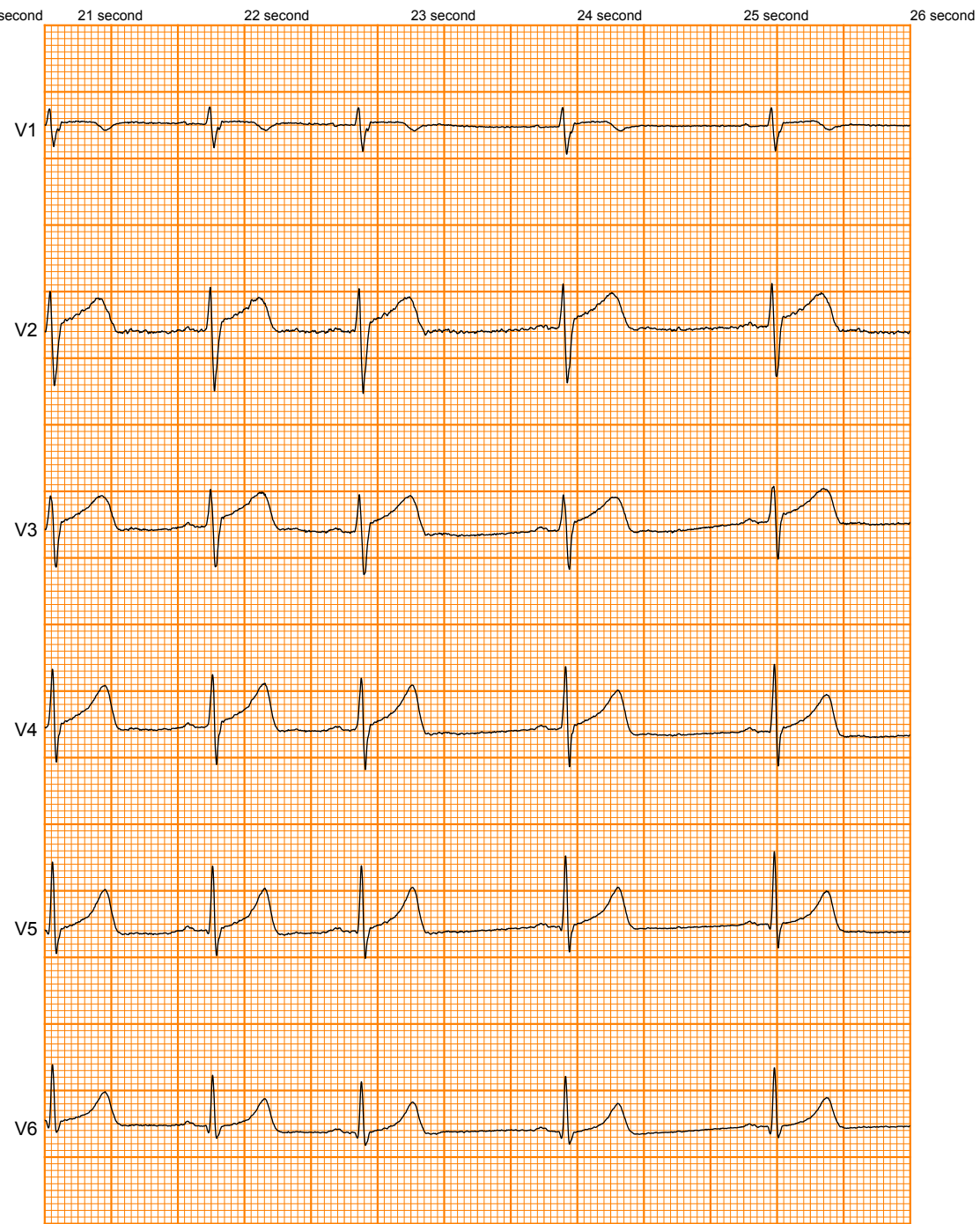
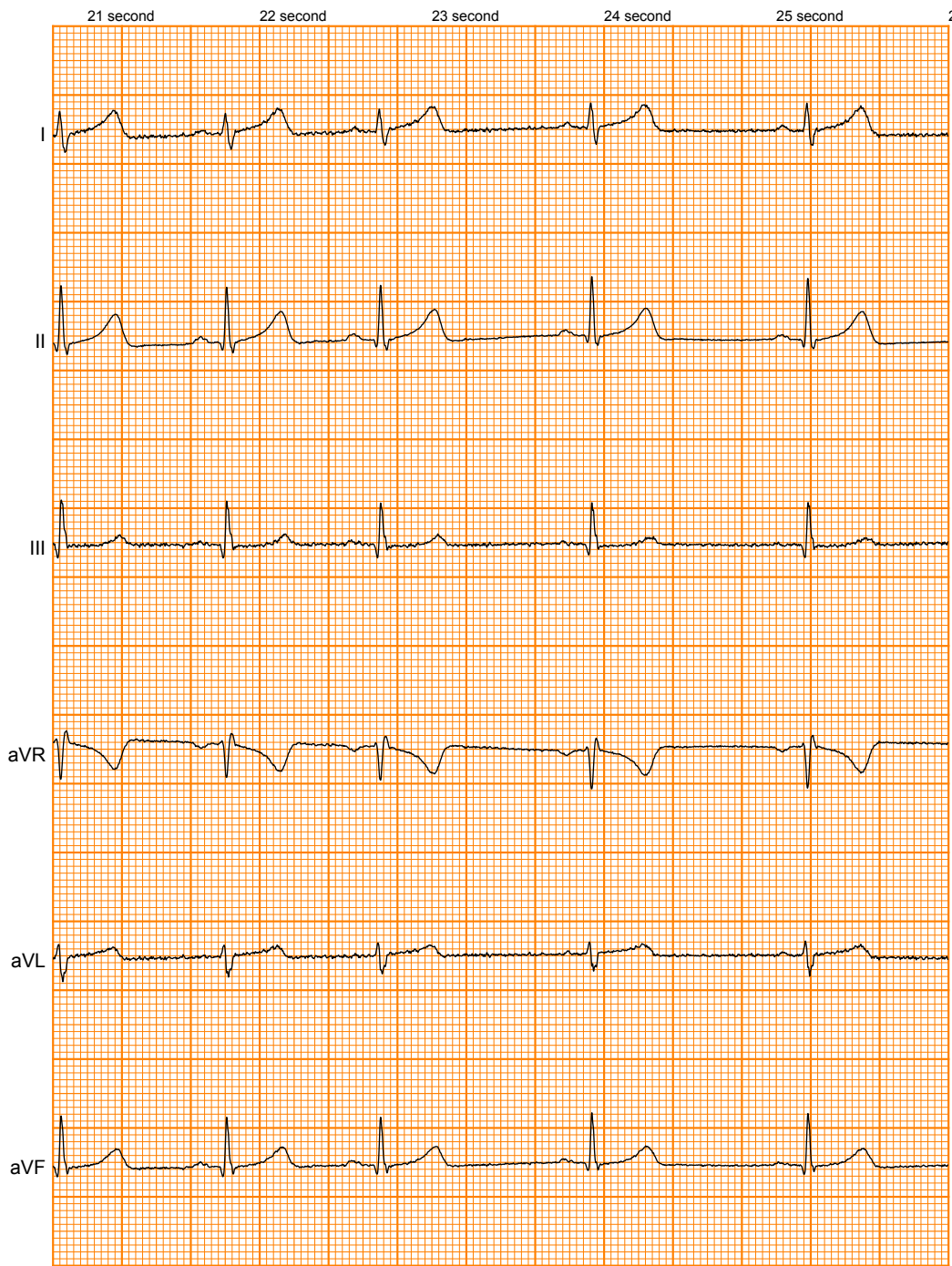




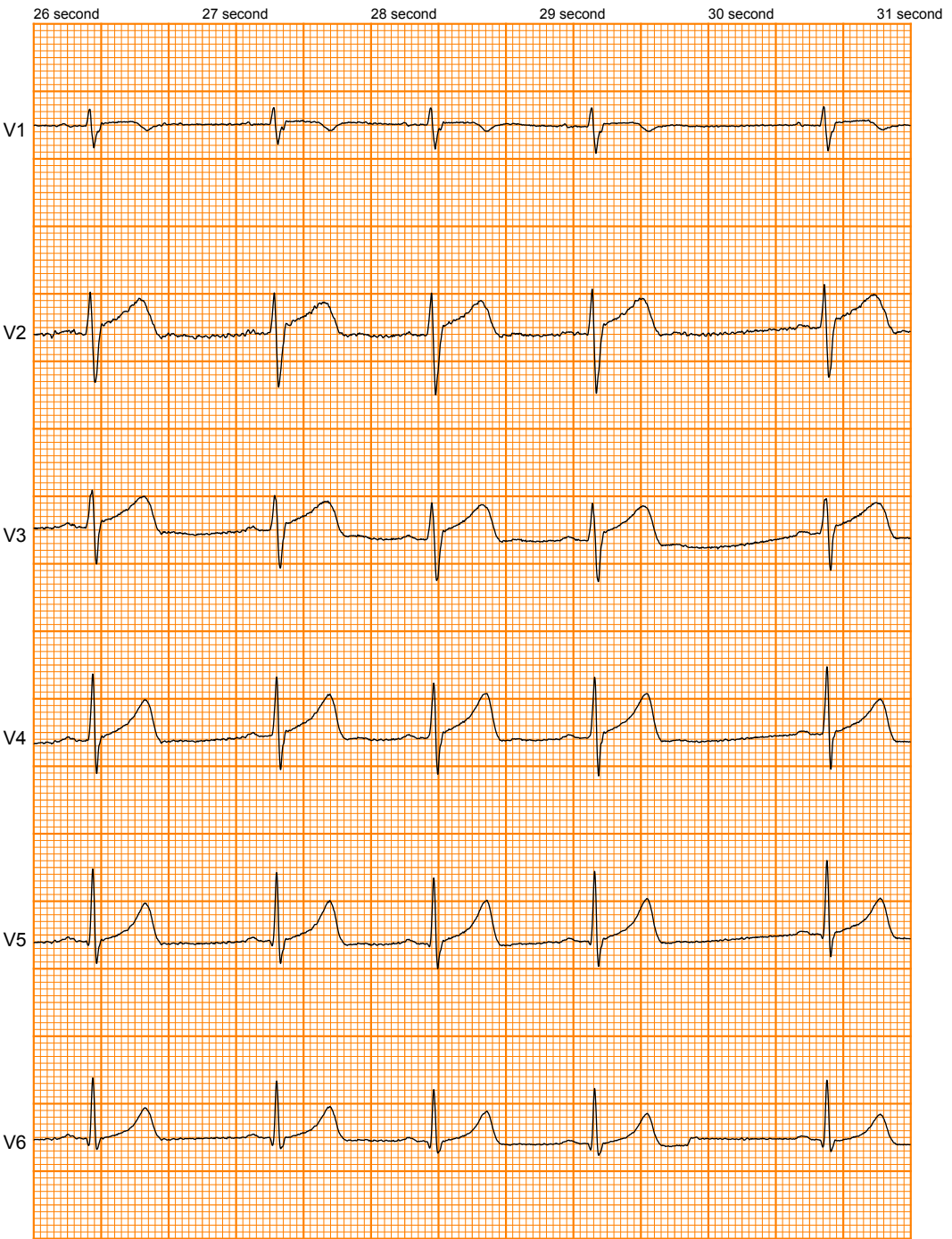
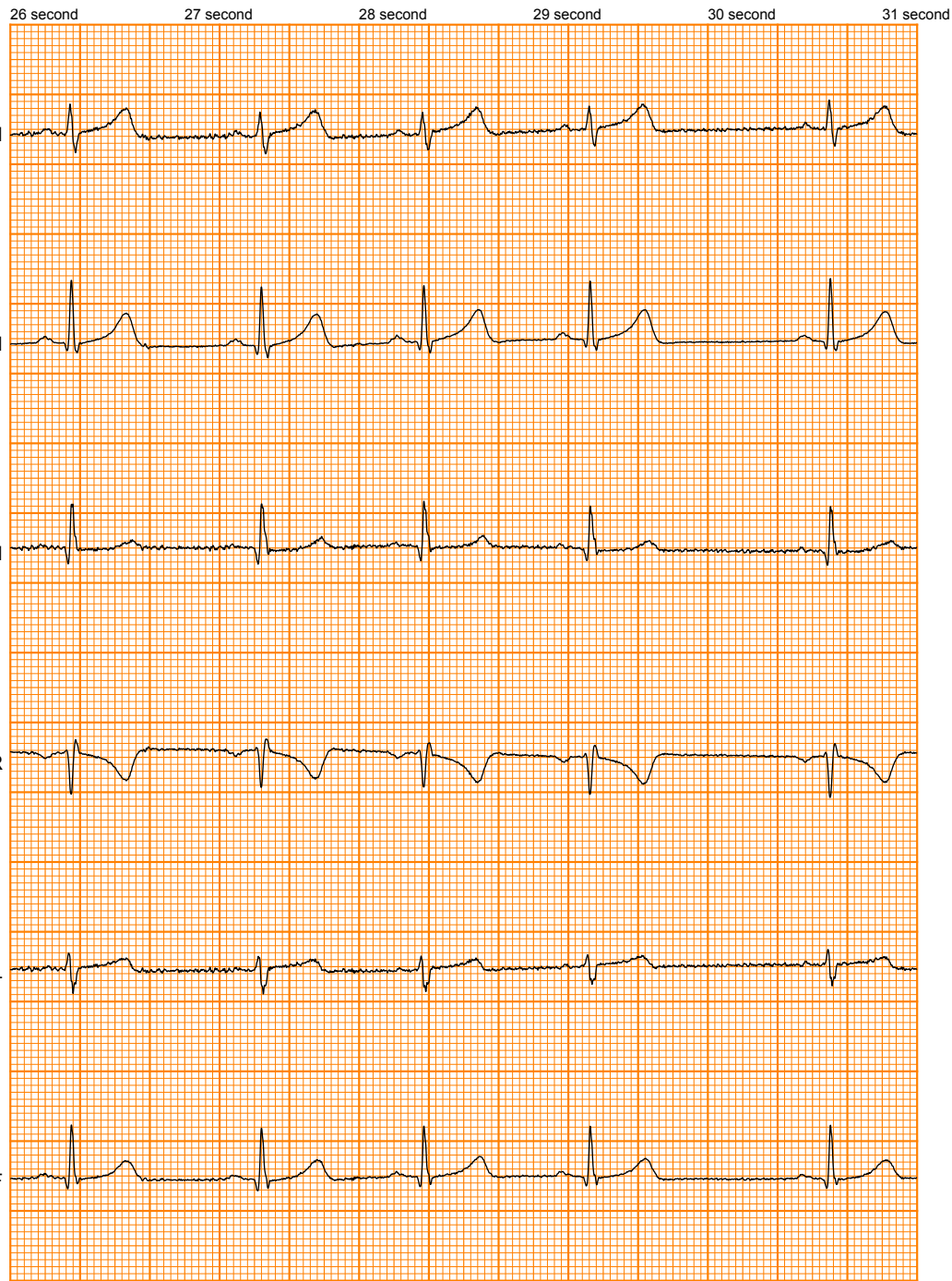
25mm/s 5mm/mV №245960



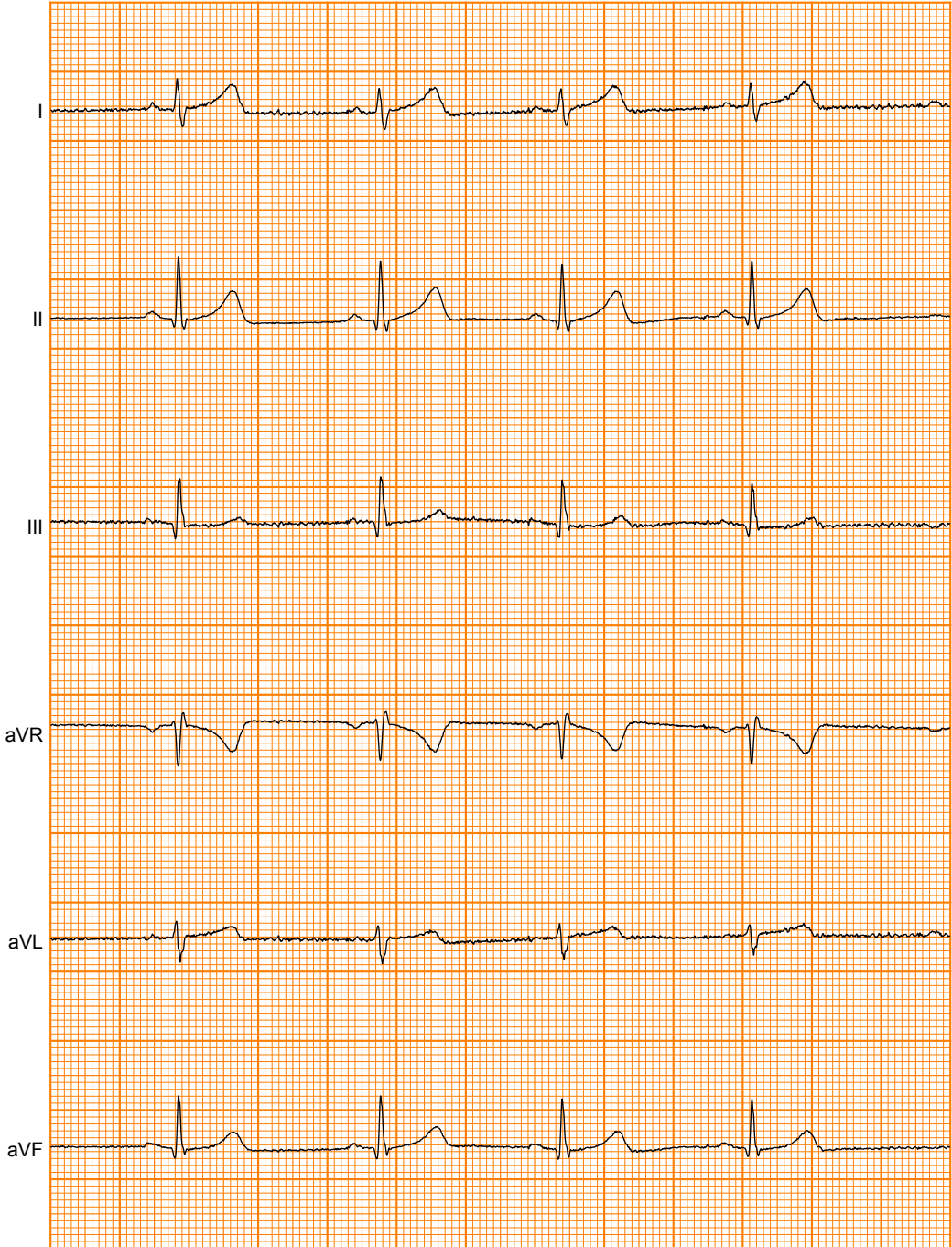
25mm/s 5mm/mV №245960



25mm/s 5mm/mV №245960

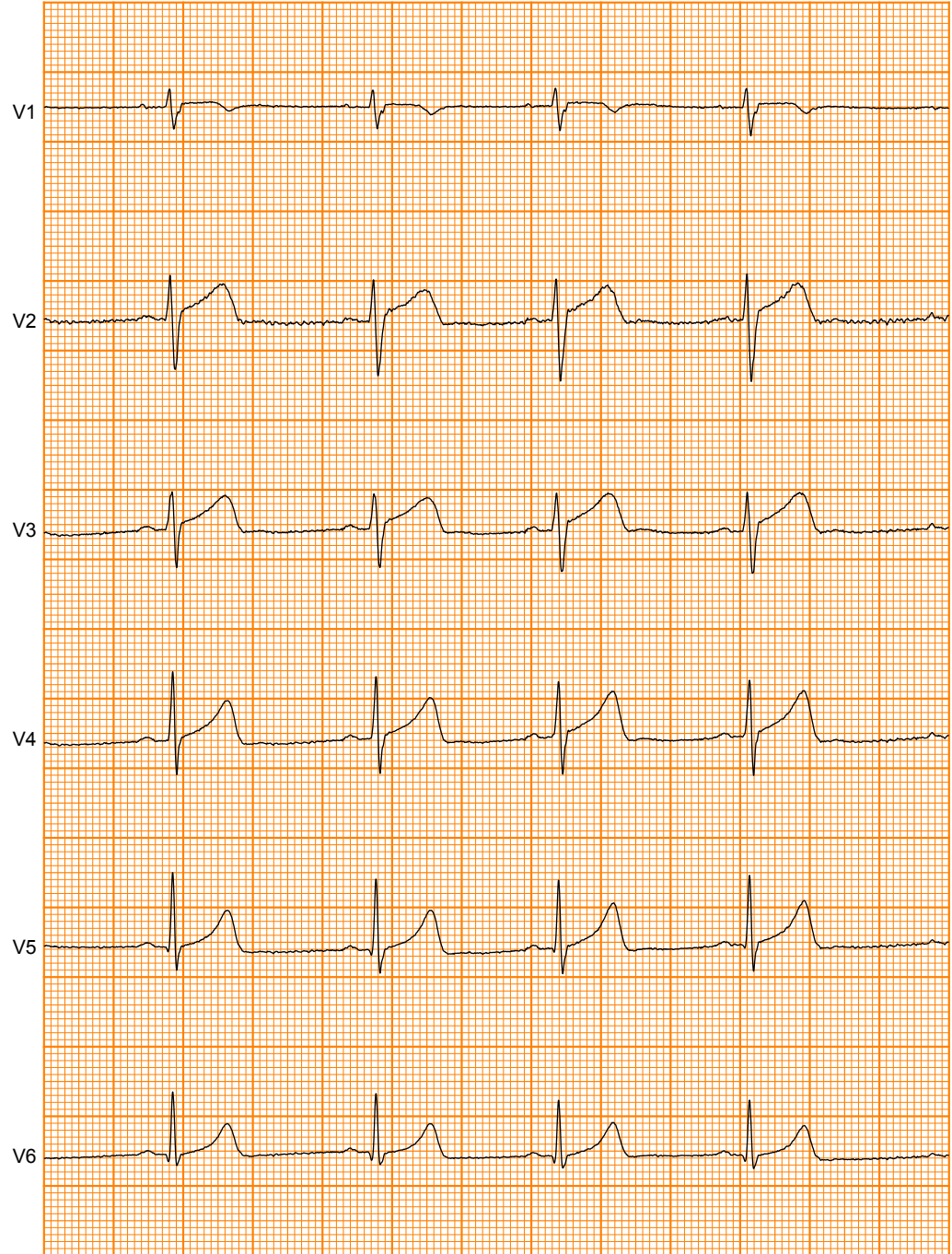


32 second 33 second 34 second 35 second 36 second



25mm/s 5mm/mV №245960

32 second 33 second 34 second 35 second 36 second



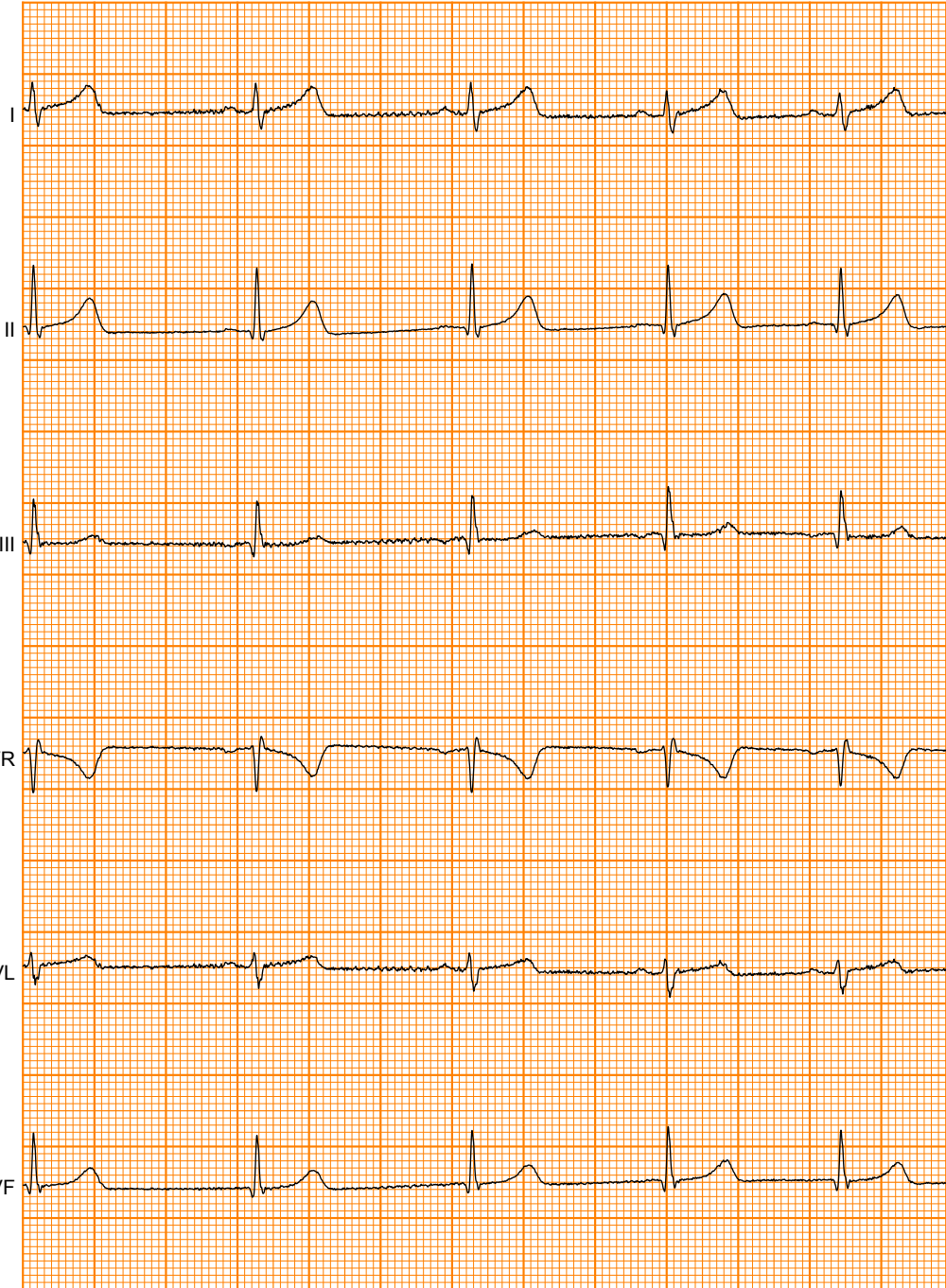
37 second

38 second

39 second

40 second

41 second



25mm/s 5mm/mV №245960

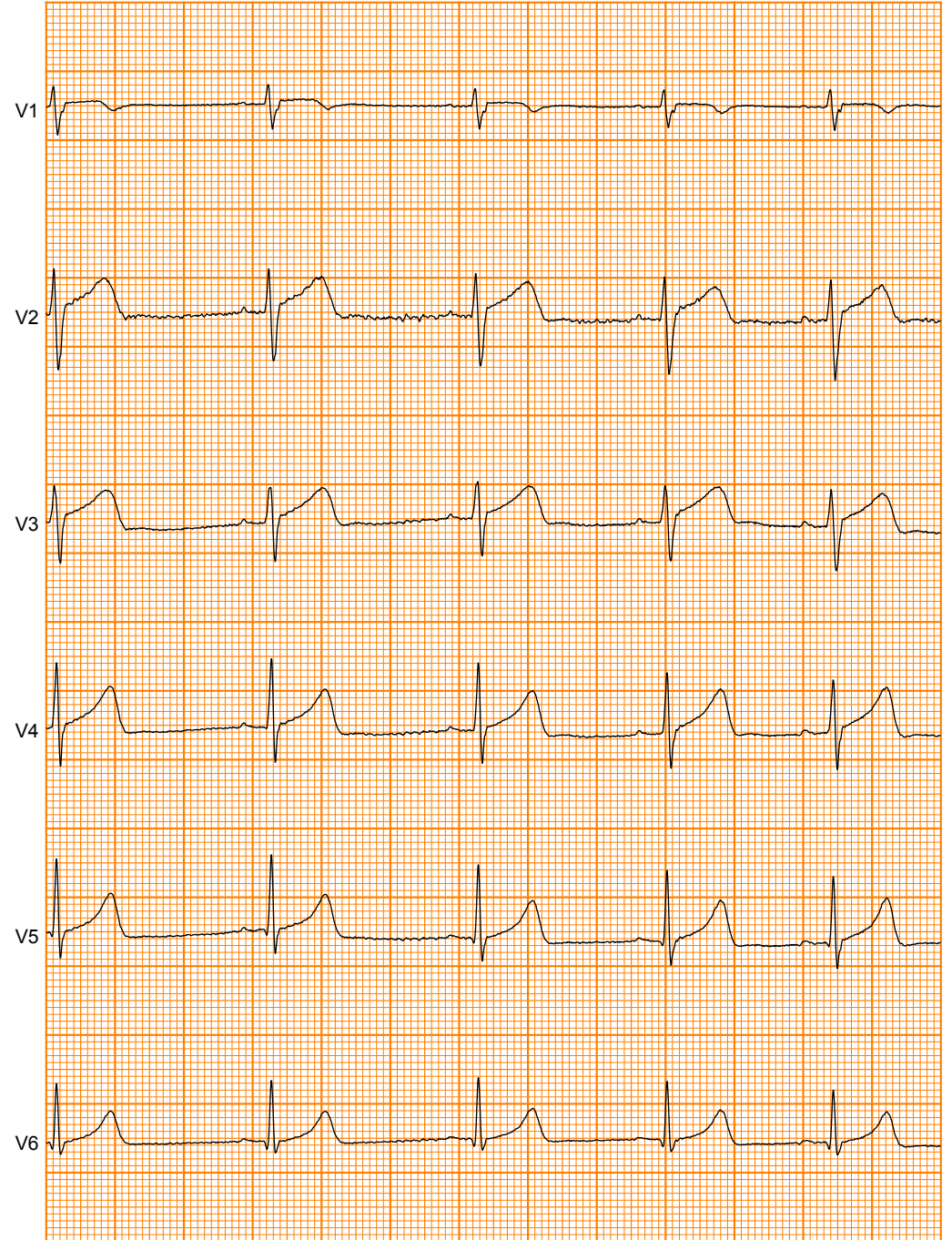
37 second

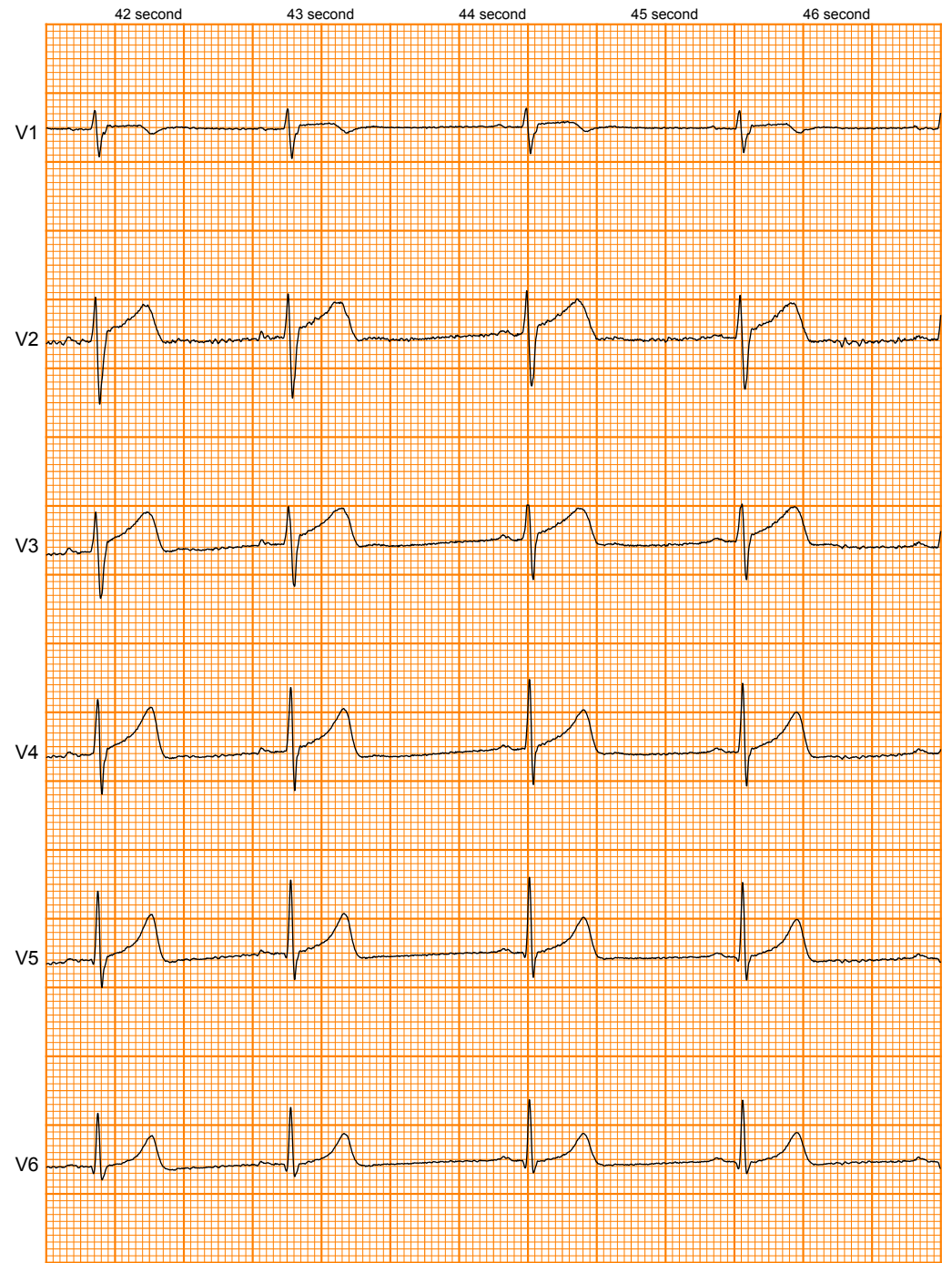
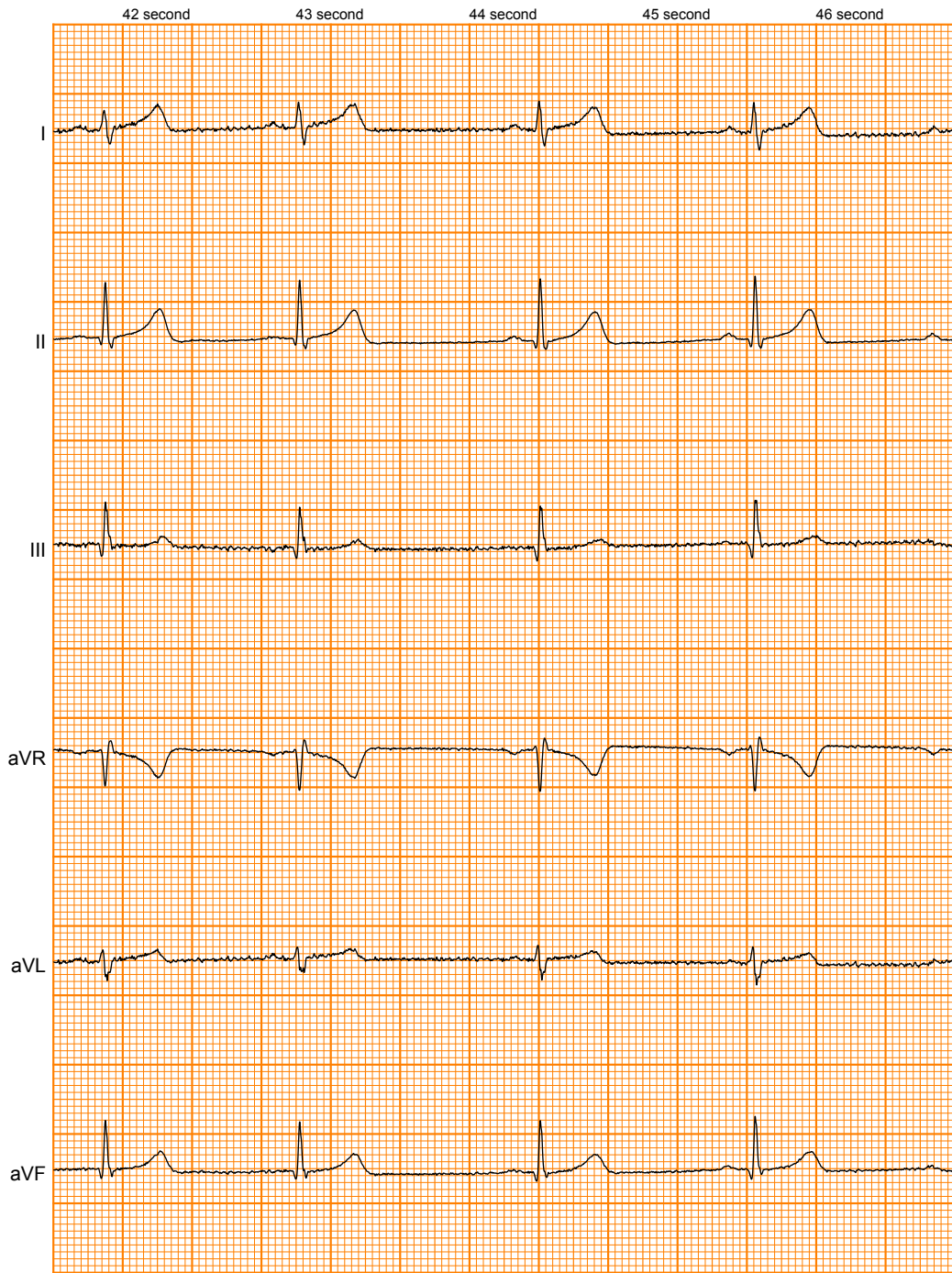
38 second

39 second

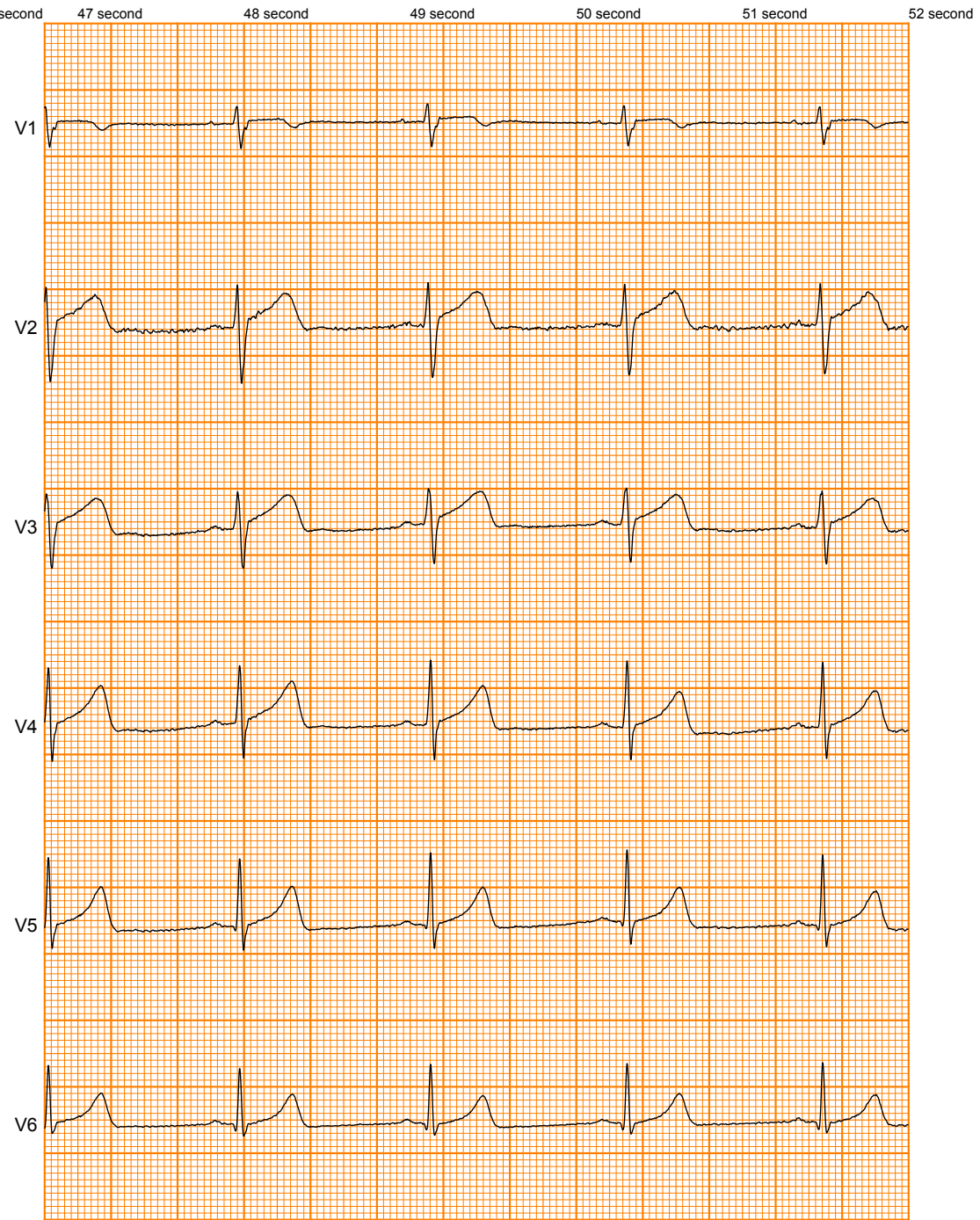
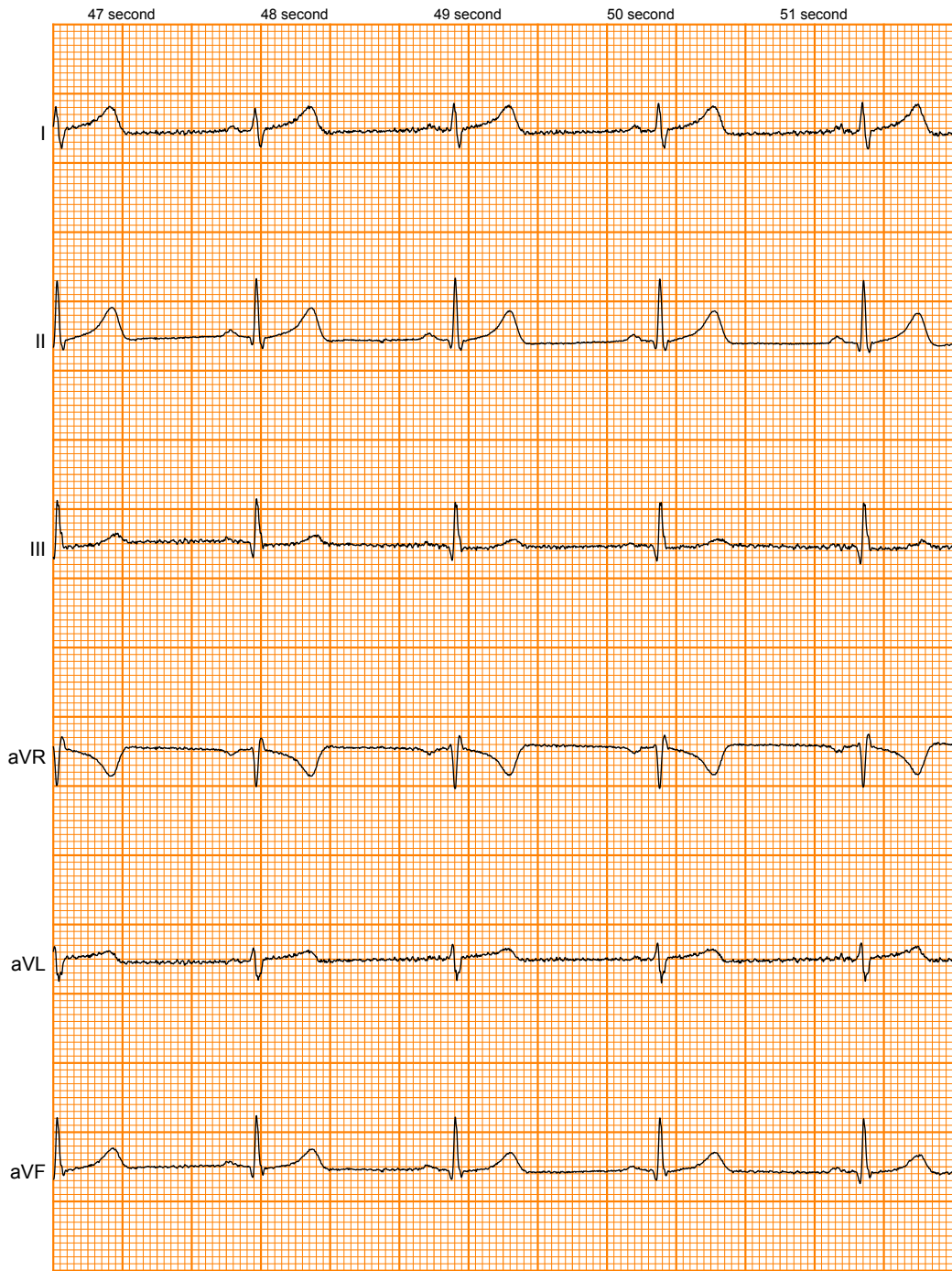
40 second

41 second

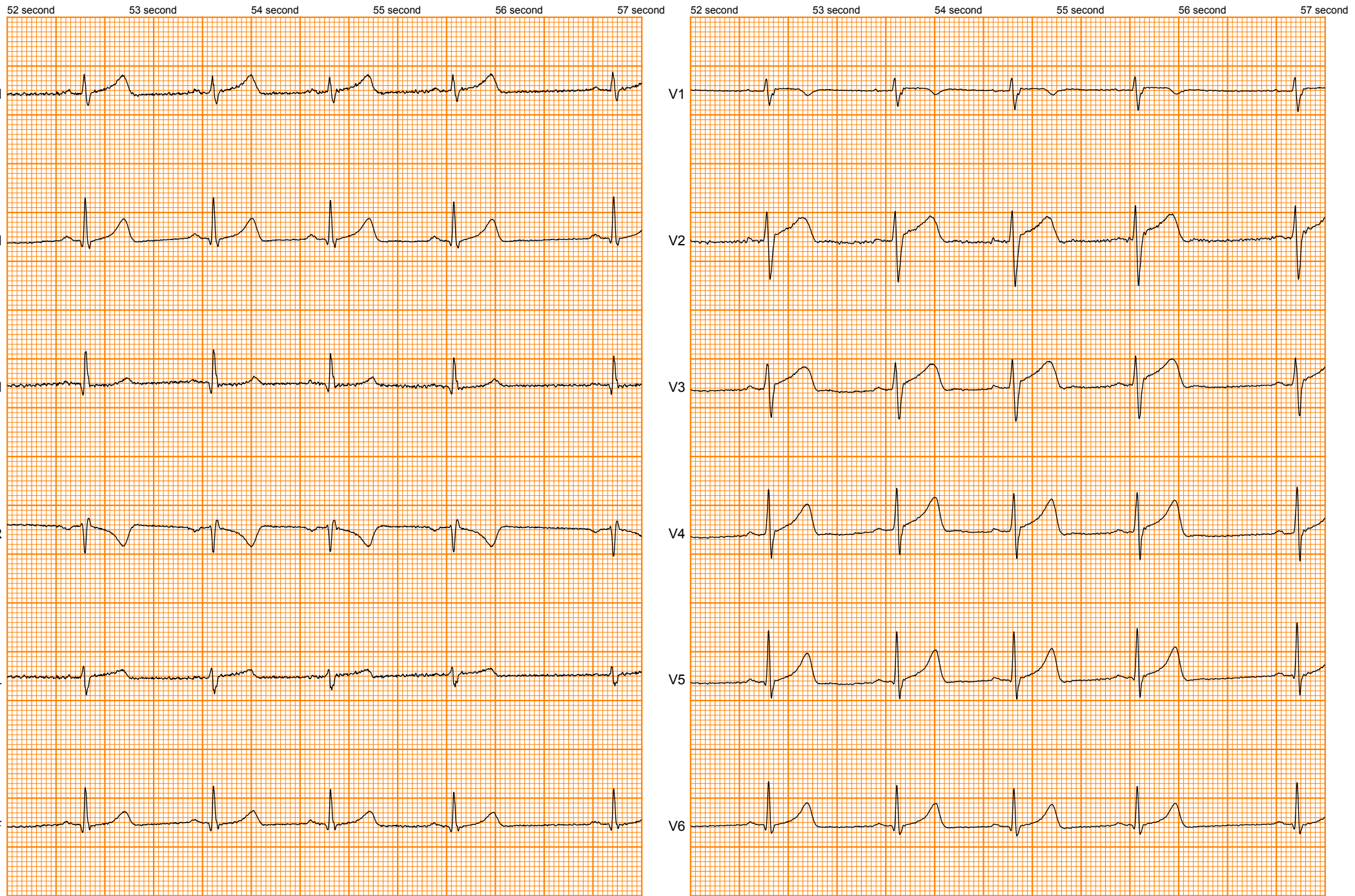




25mm/s 5mm/mV №245960

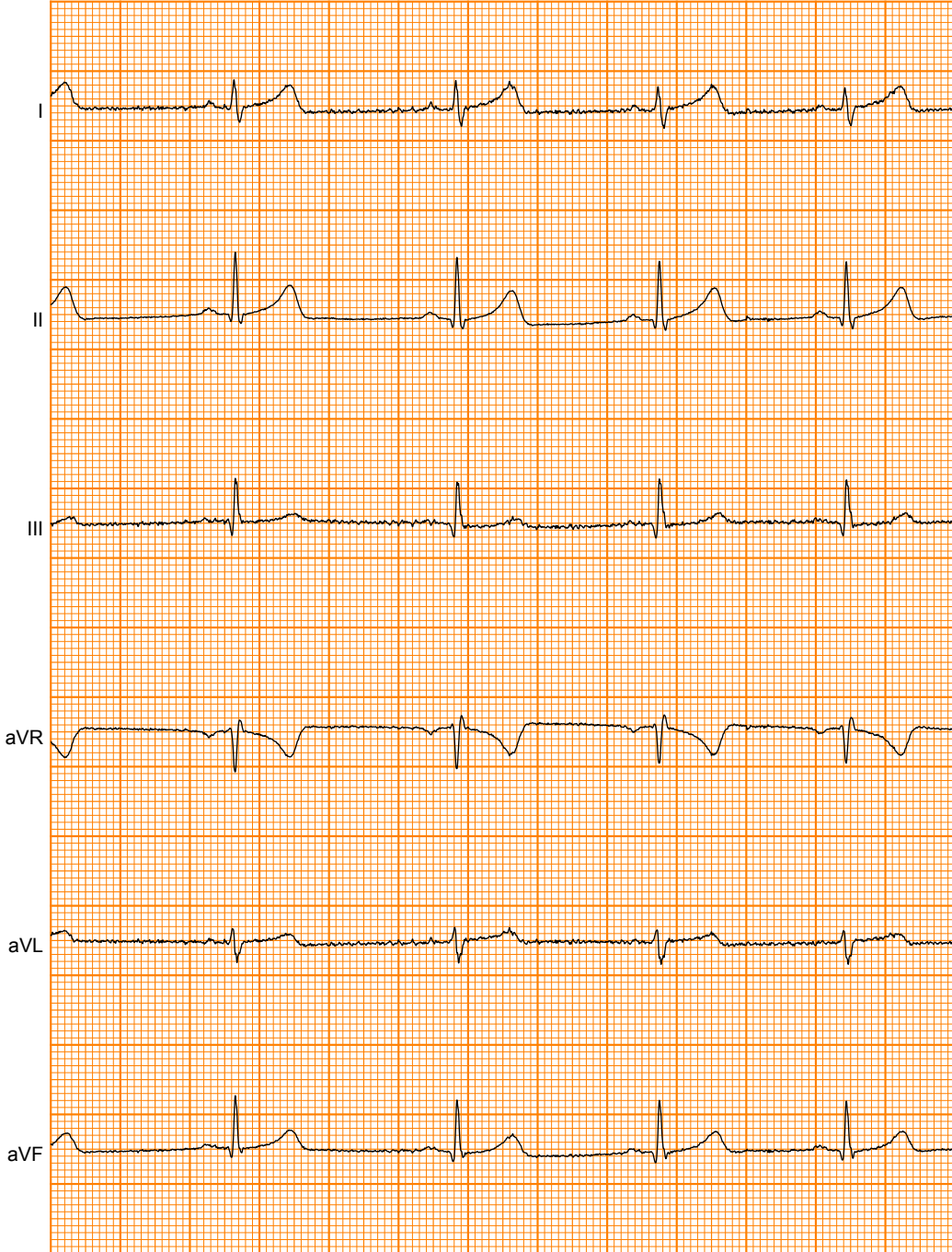


25mm/s 5mm/mV №245960



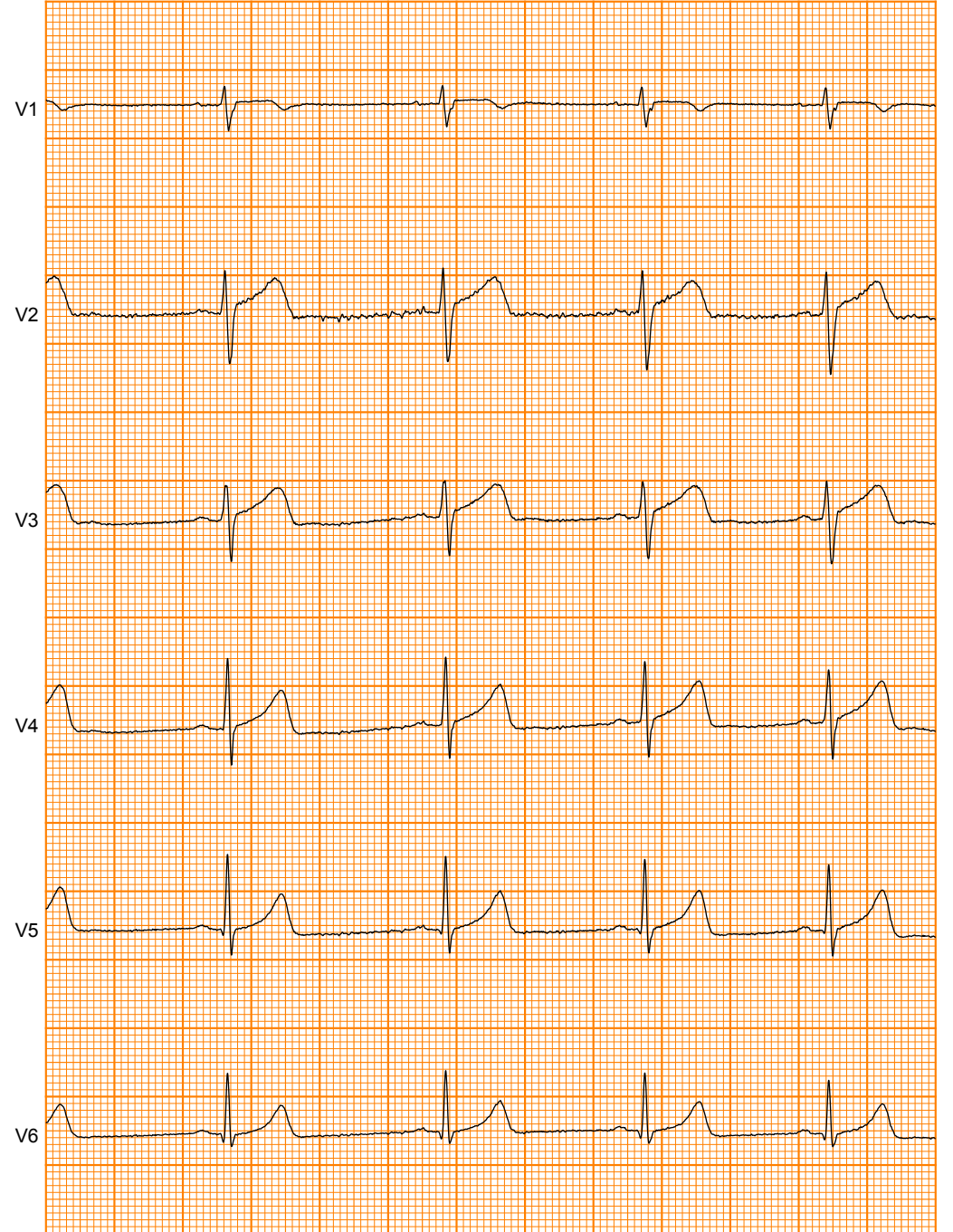
25mm/s 5mm/mV №245960

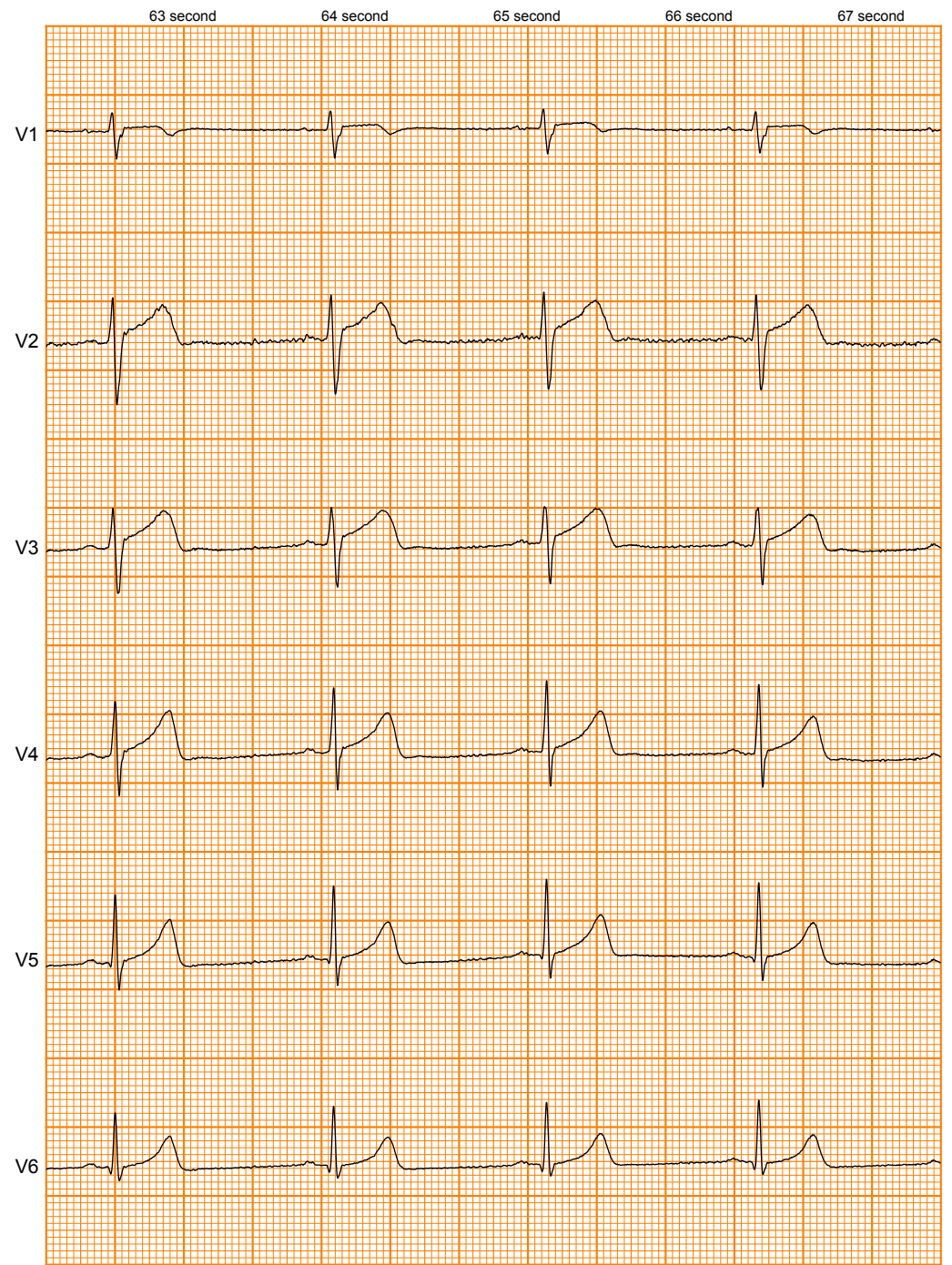
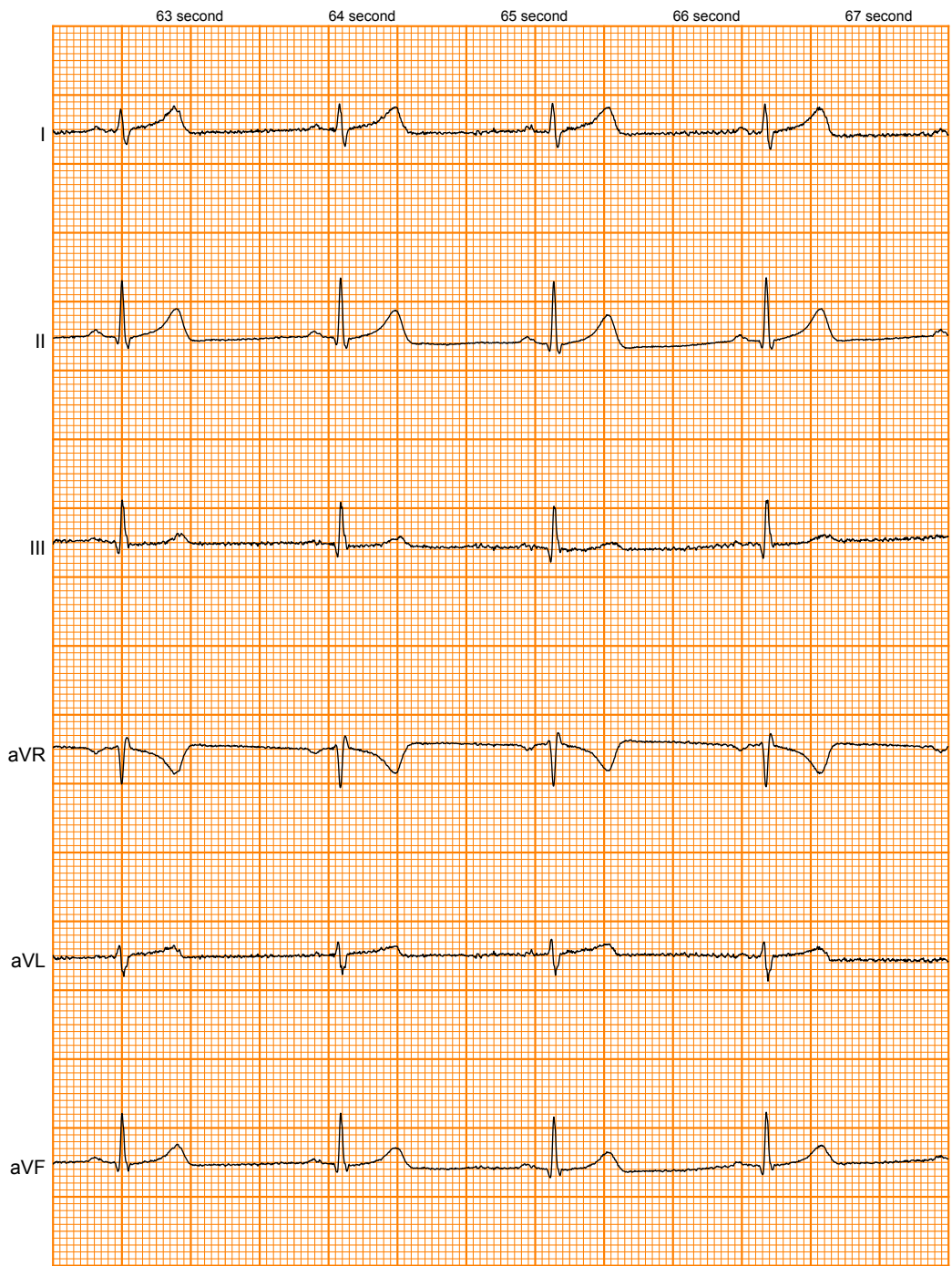
58 second 59 second 60 second 61 second 62 second



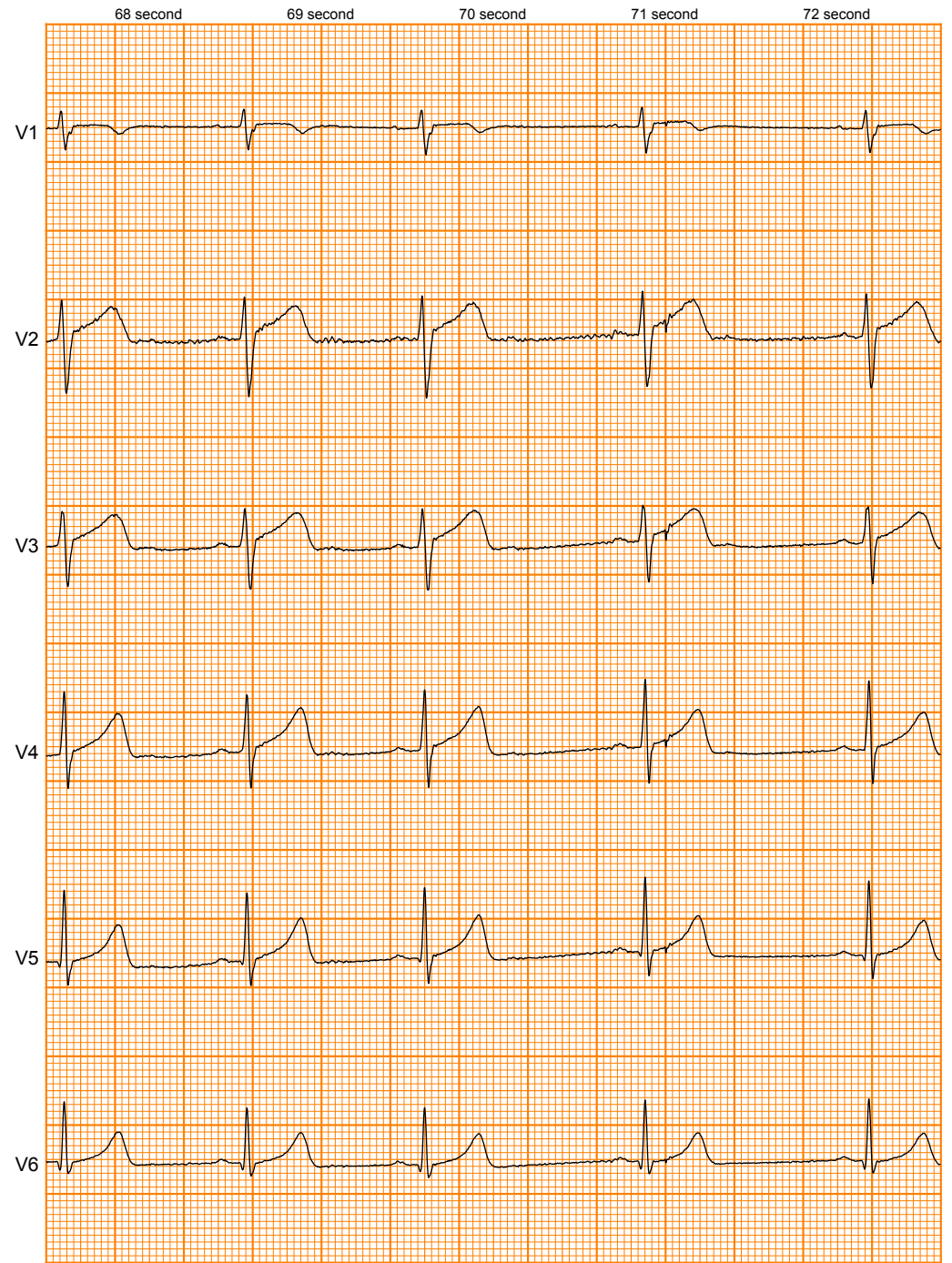
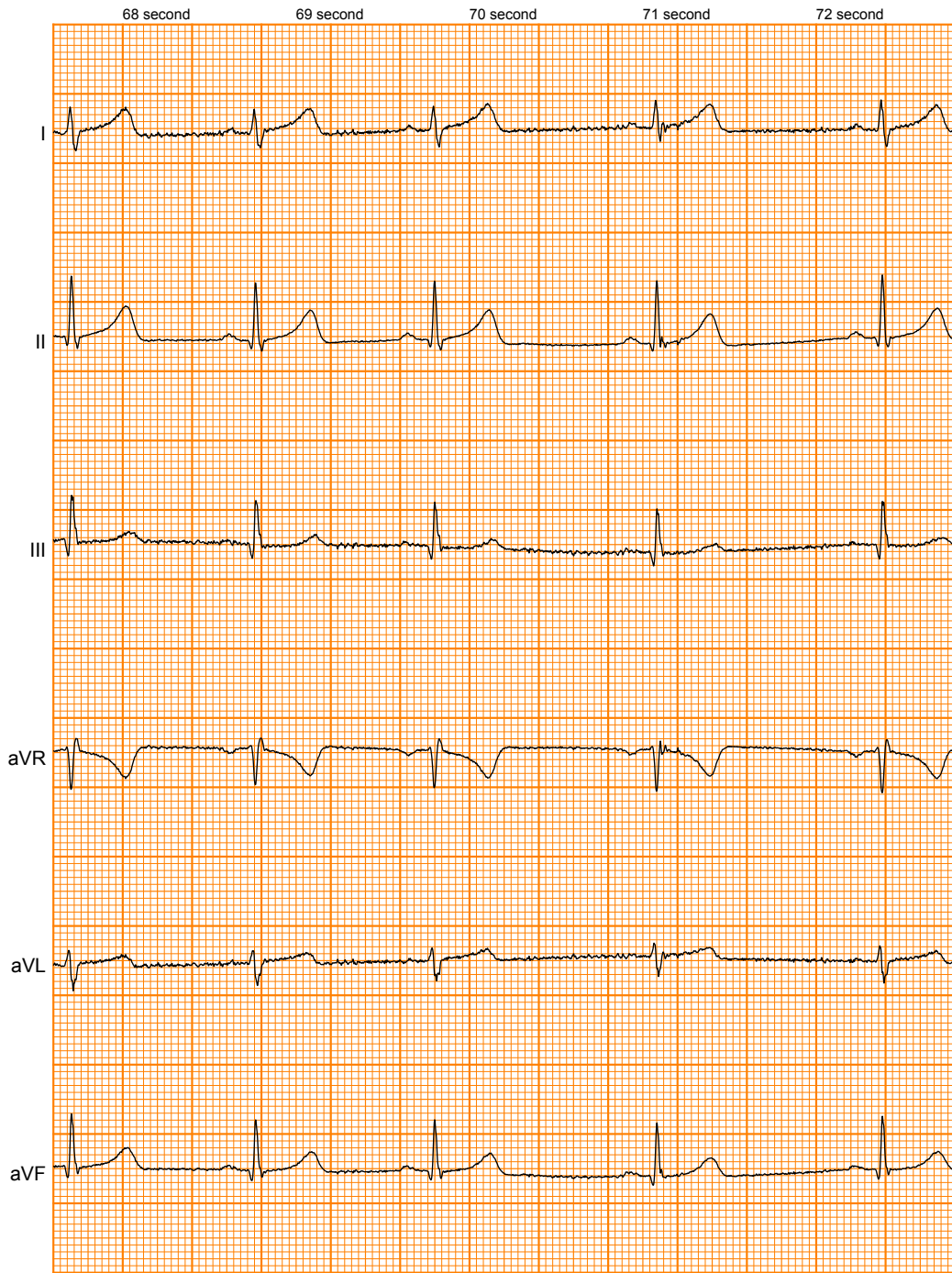
25mm/s 5mm/mV №245960

58 second 59 second 60 second 61 second 62 second

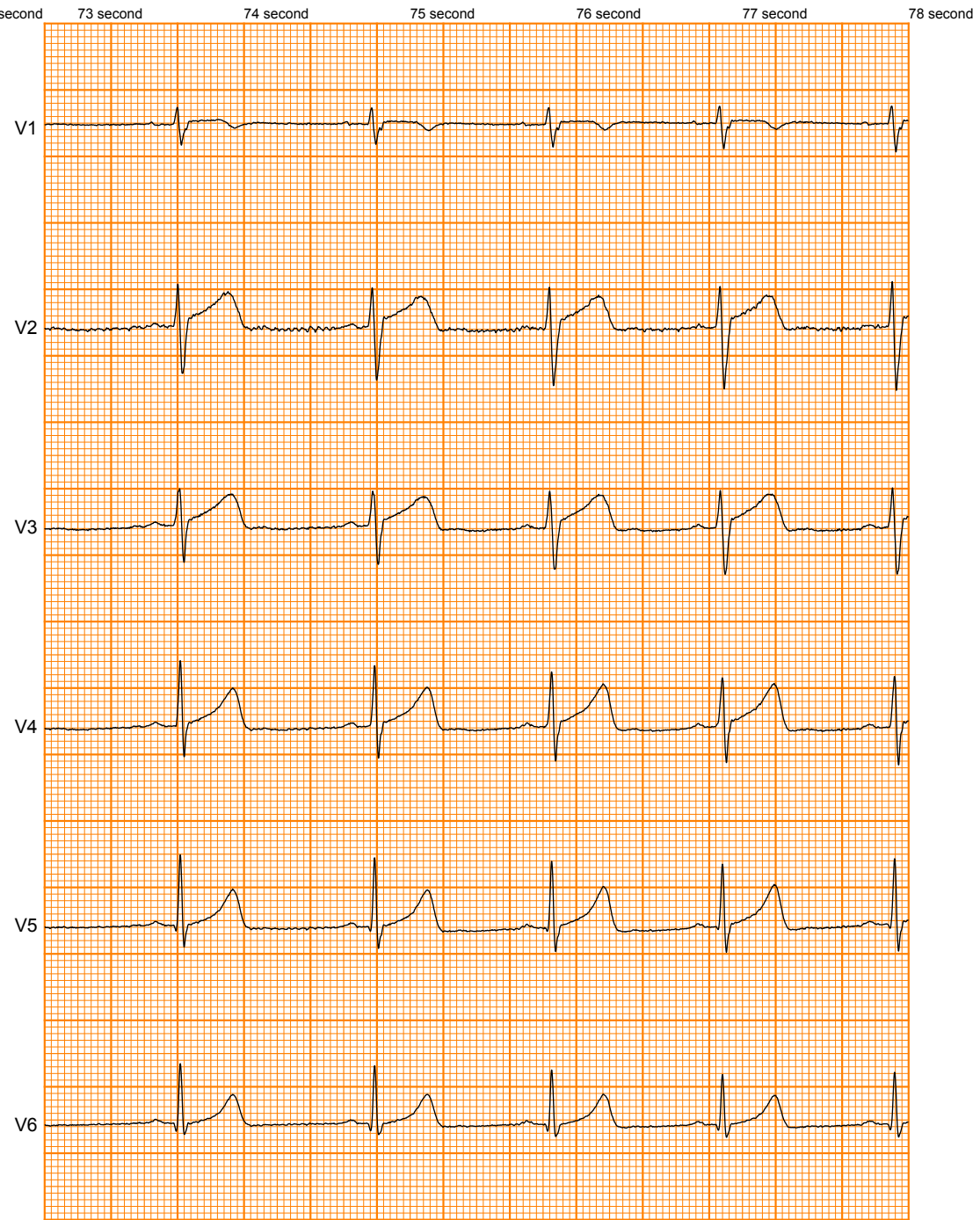
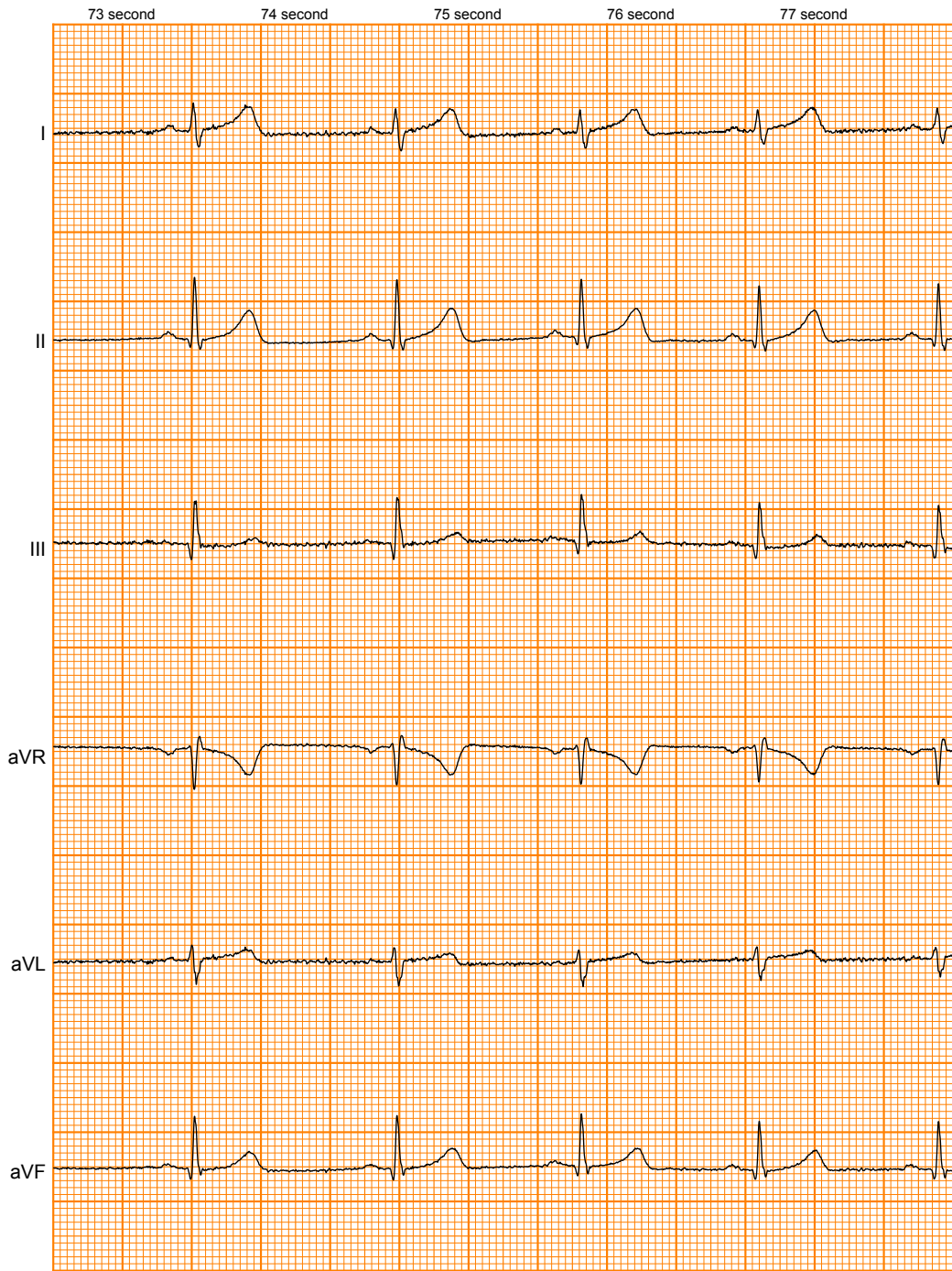




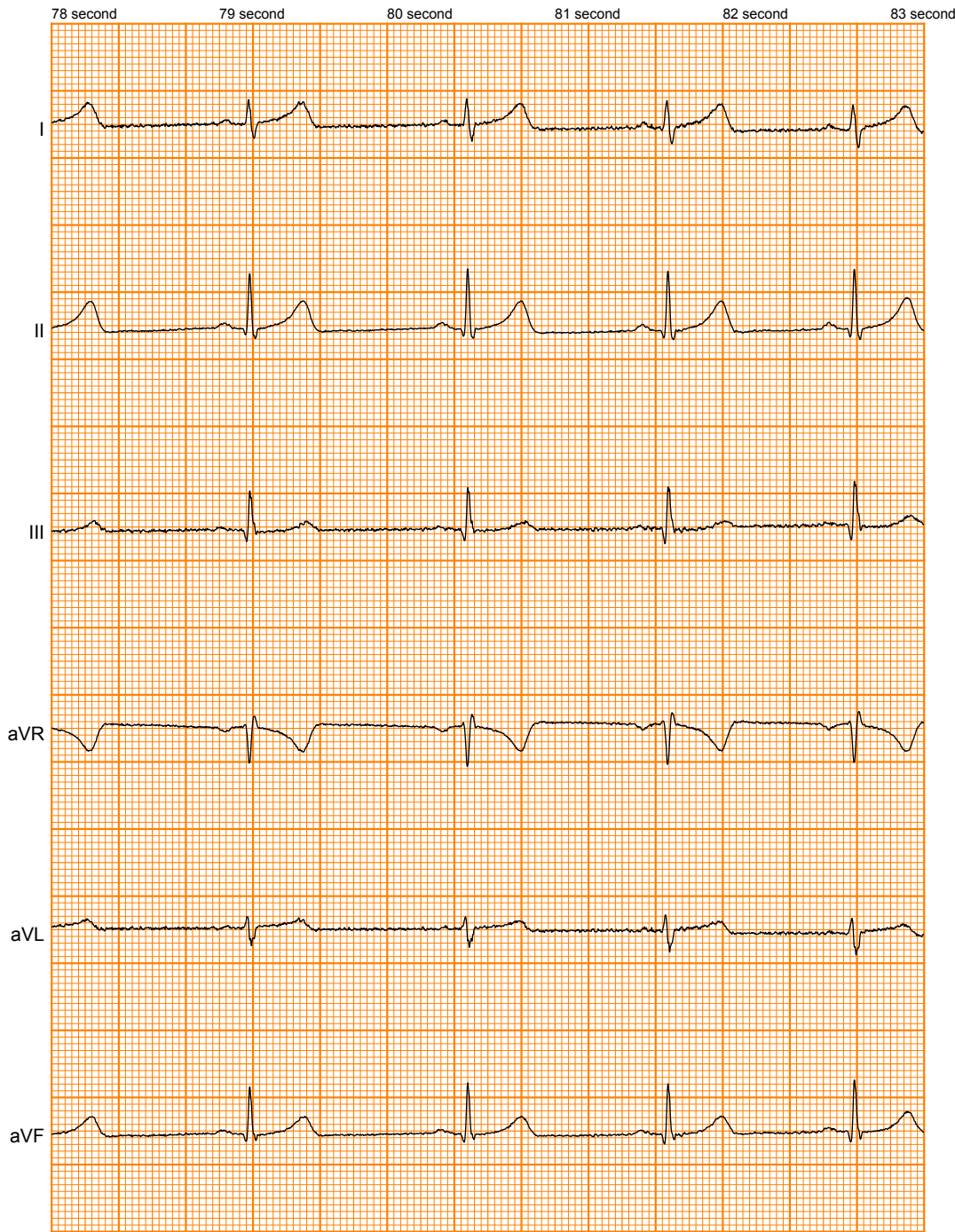
25mm/s 5mm/mV №245960



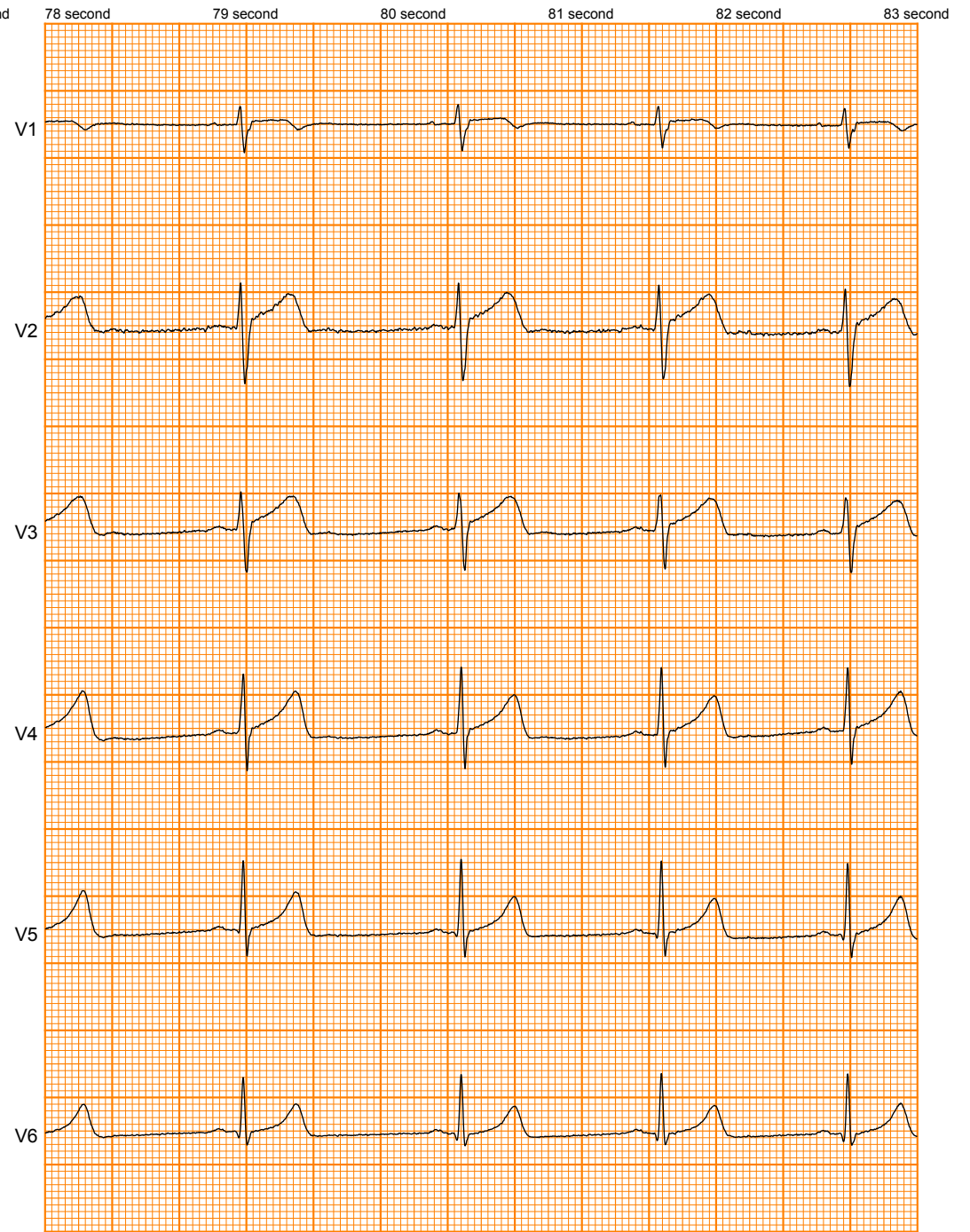
25mm/s 5mm/mV №245960



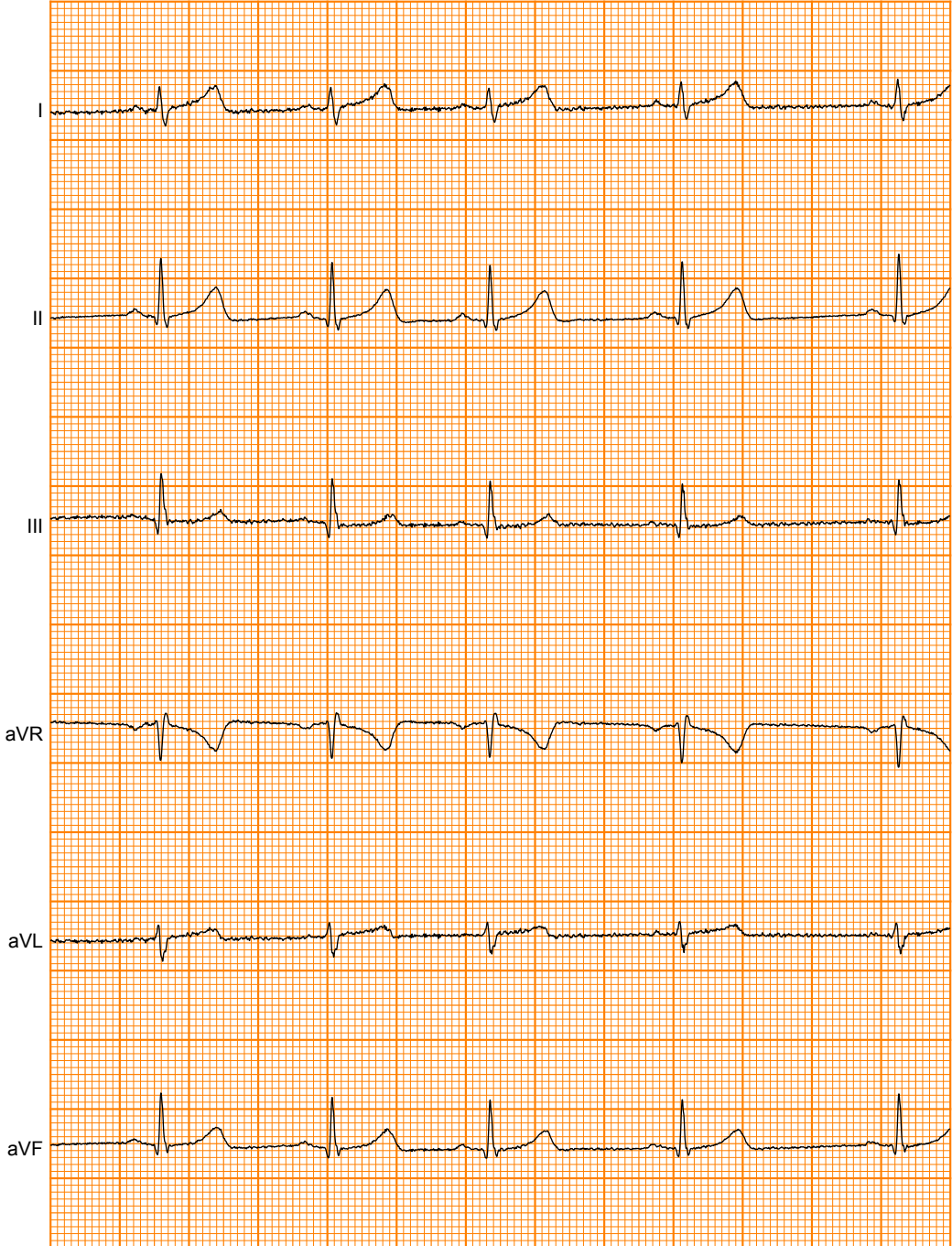
25mm/s 5mm/mV №245960



25mm/s 5mm/mV №245960

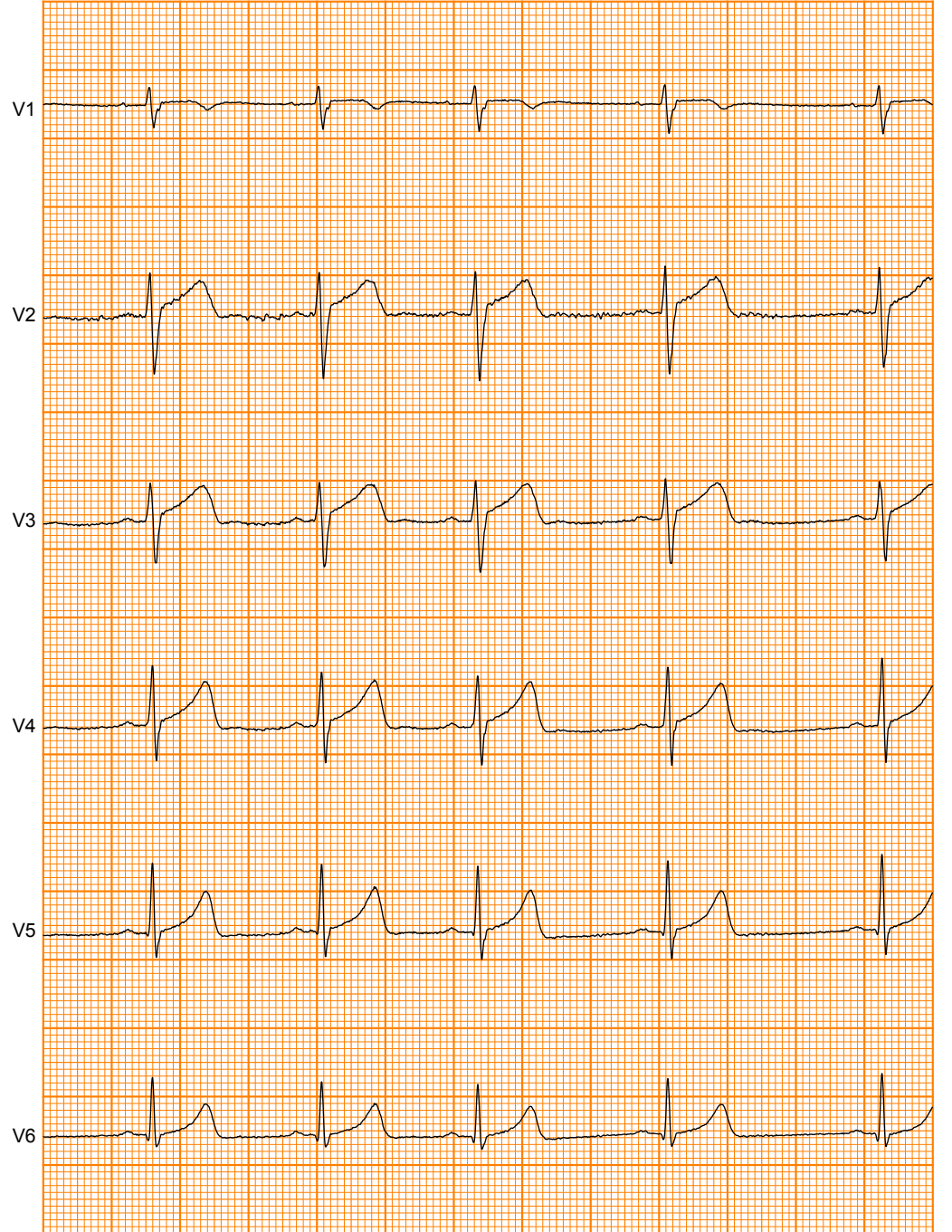


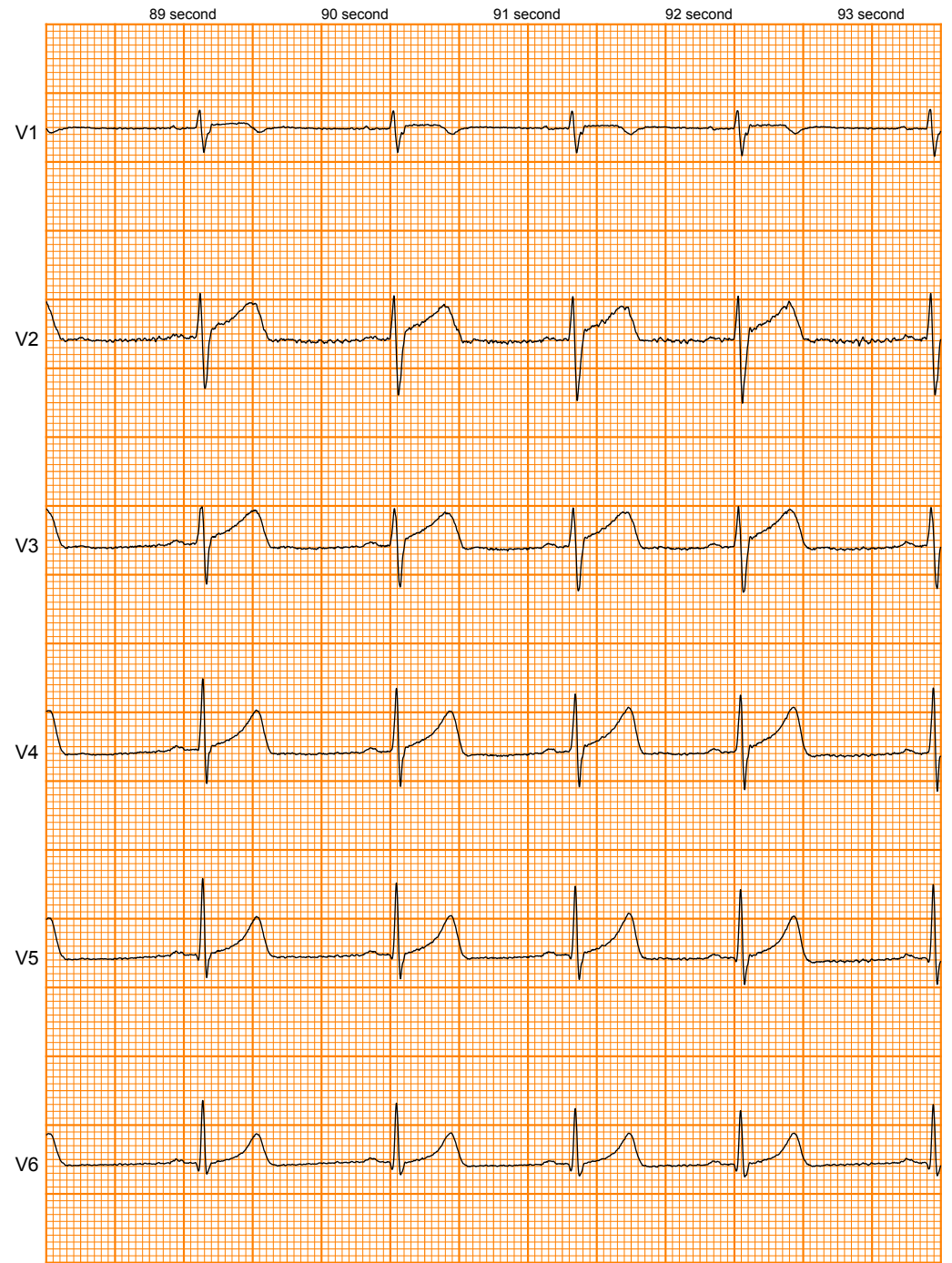
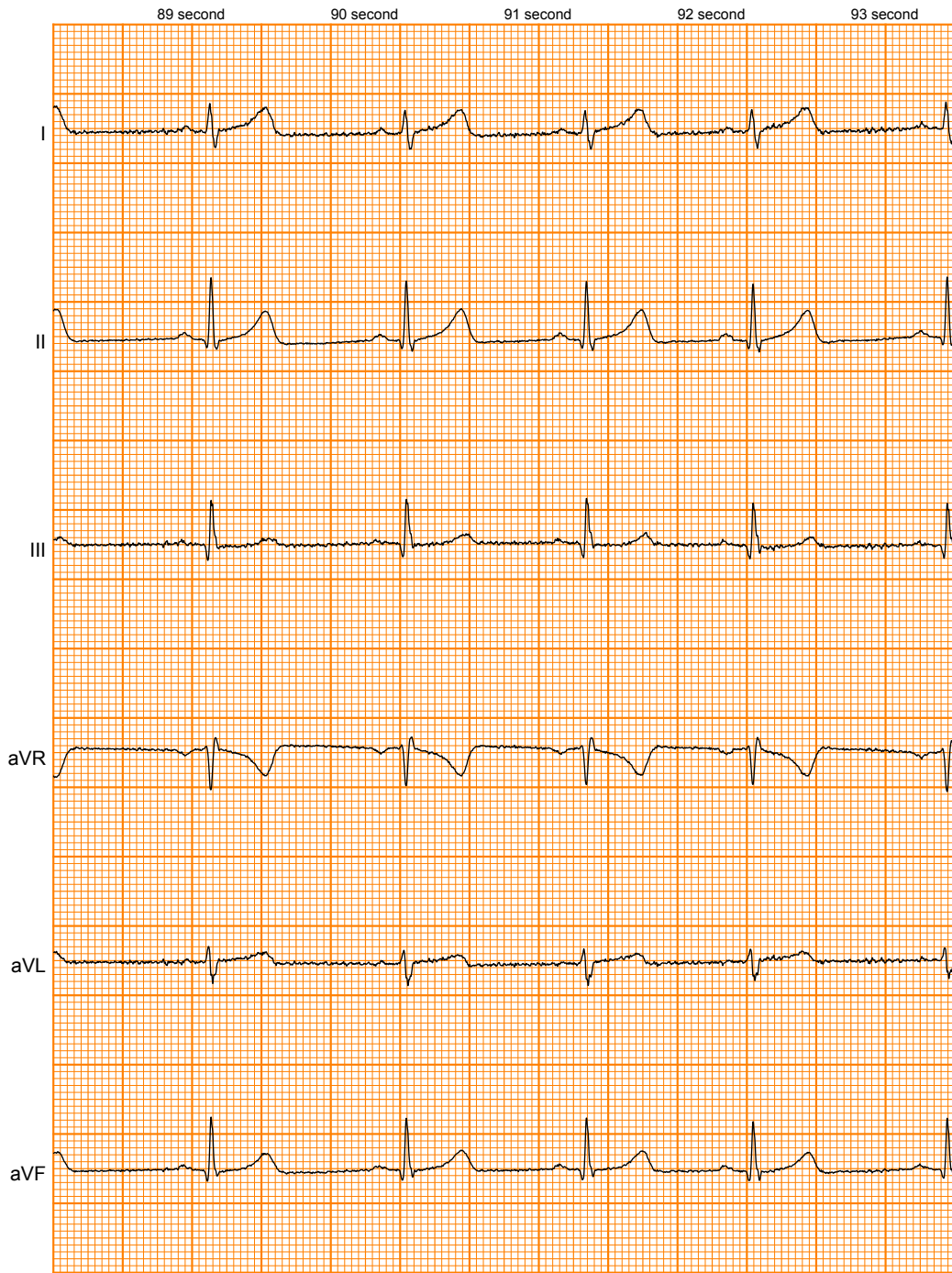
84 second 85 second 86 second 87 second 88 second

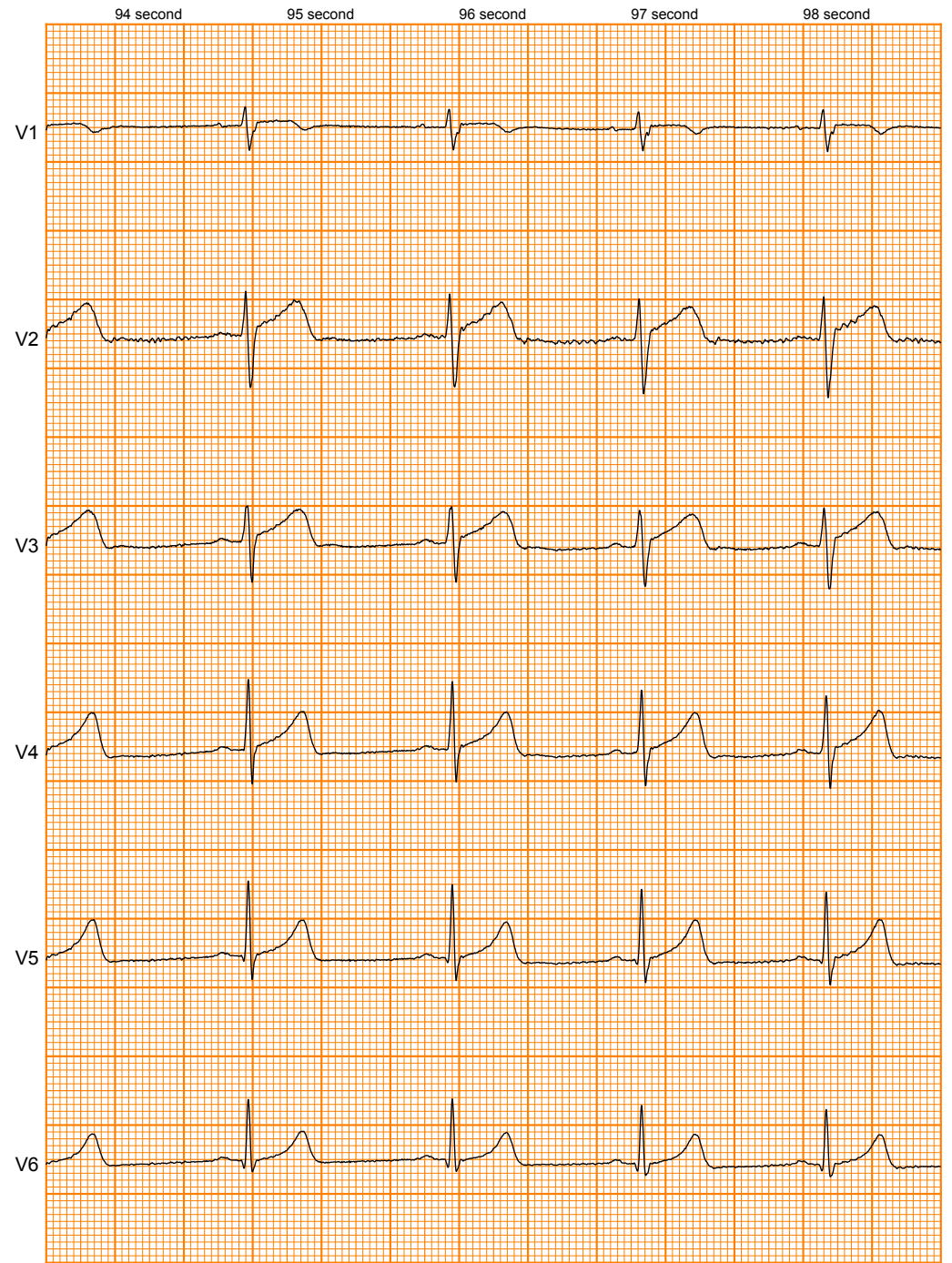
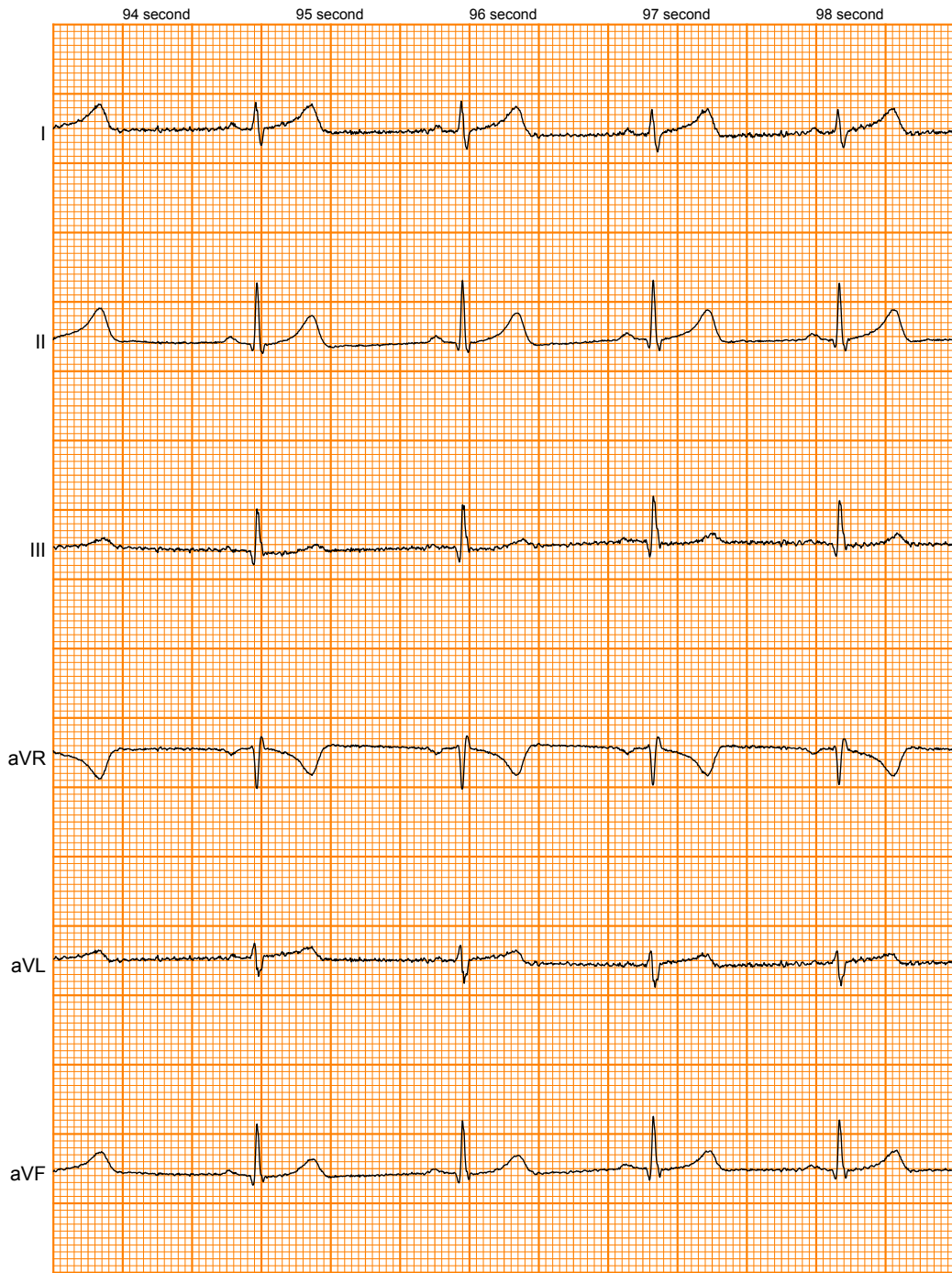


25mm/s 5mm/mV №245960

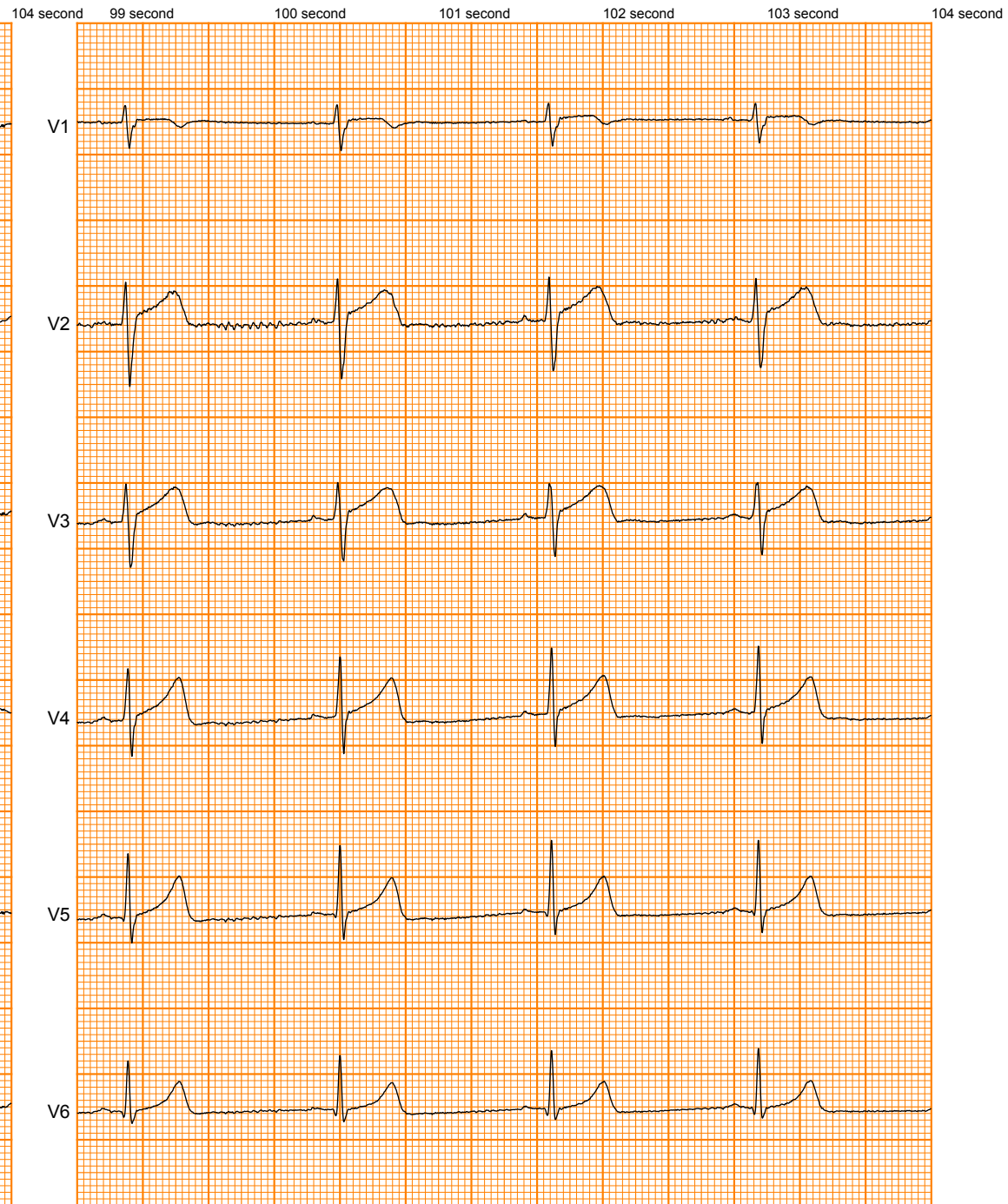
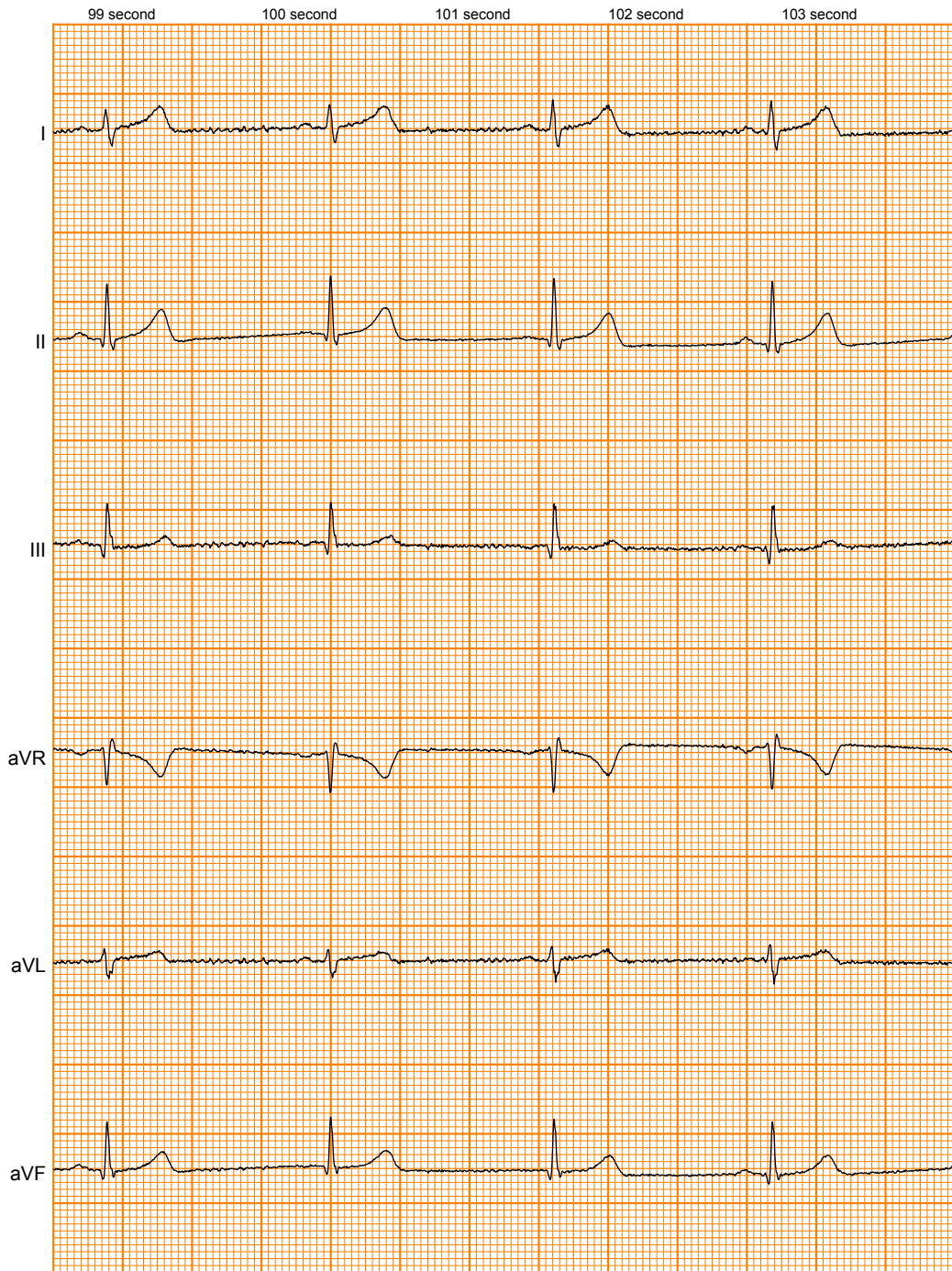
84 second 85 second 86 second 87 second 88 second





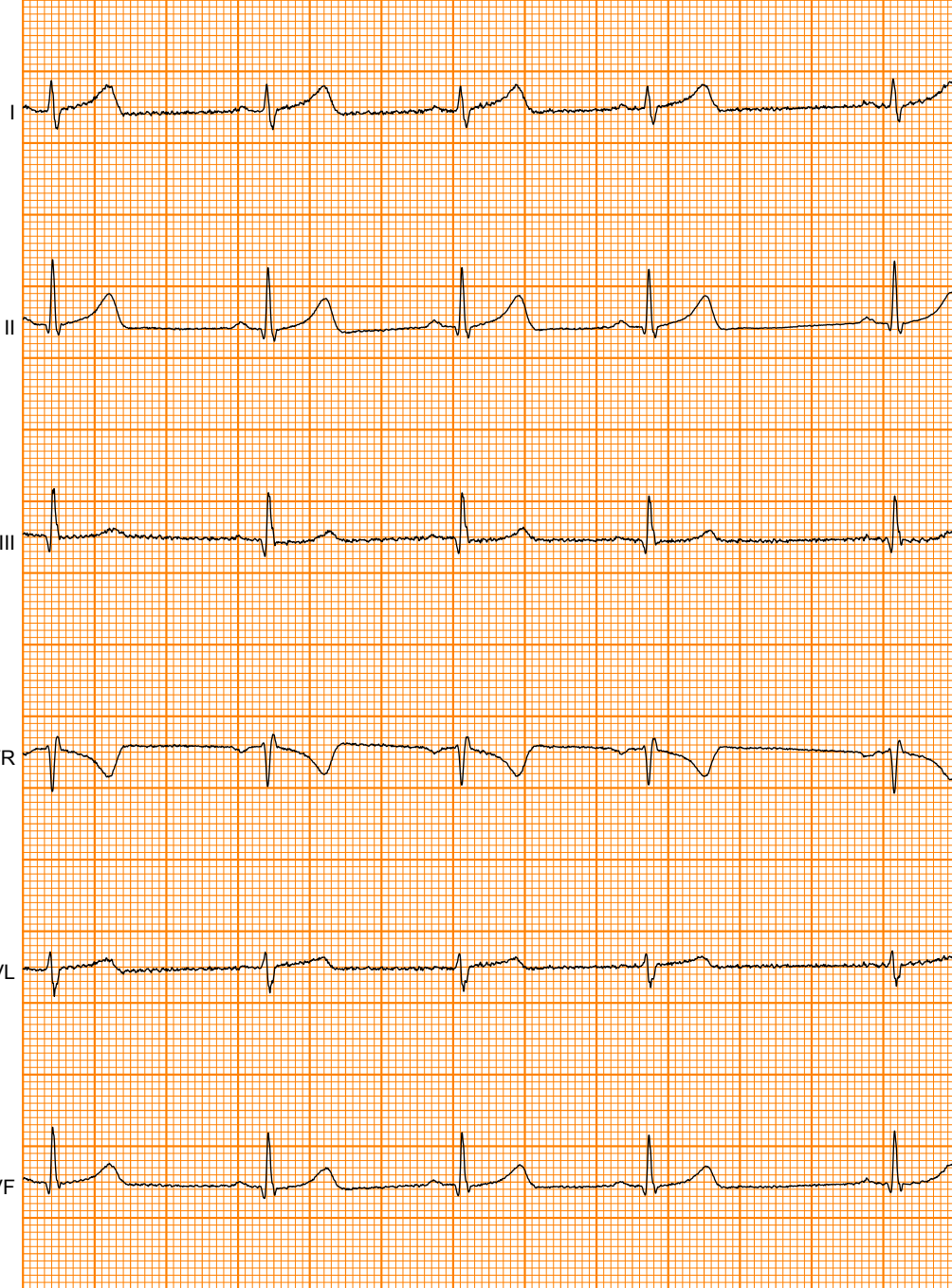


25mm/s 5mm/mV №245960



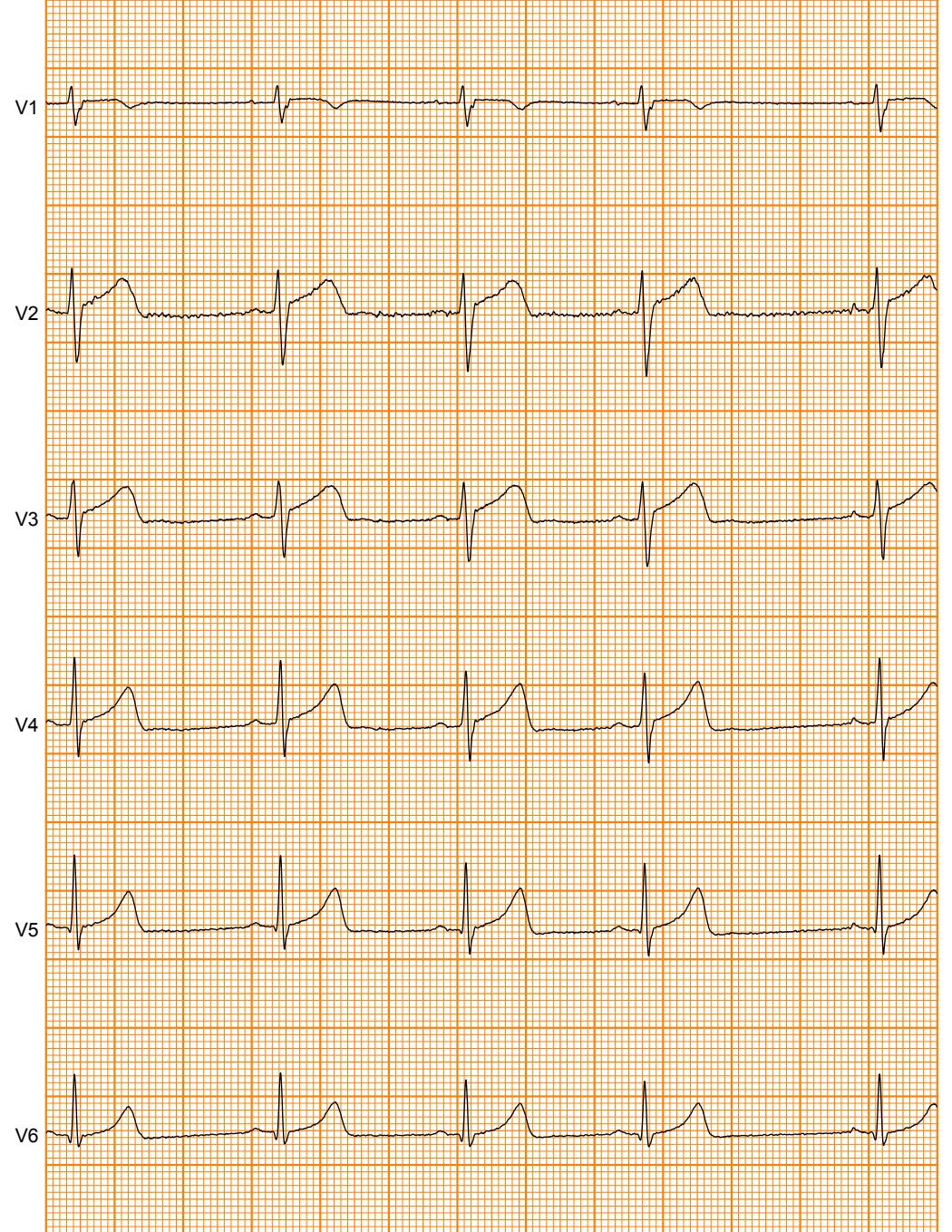
25mm/s 5mm/mV №245960

104 second 105 second 106 second 107 second 108 second 109 second

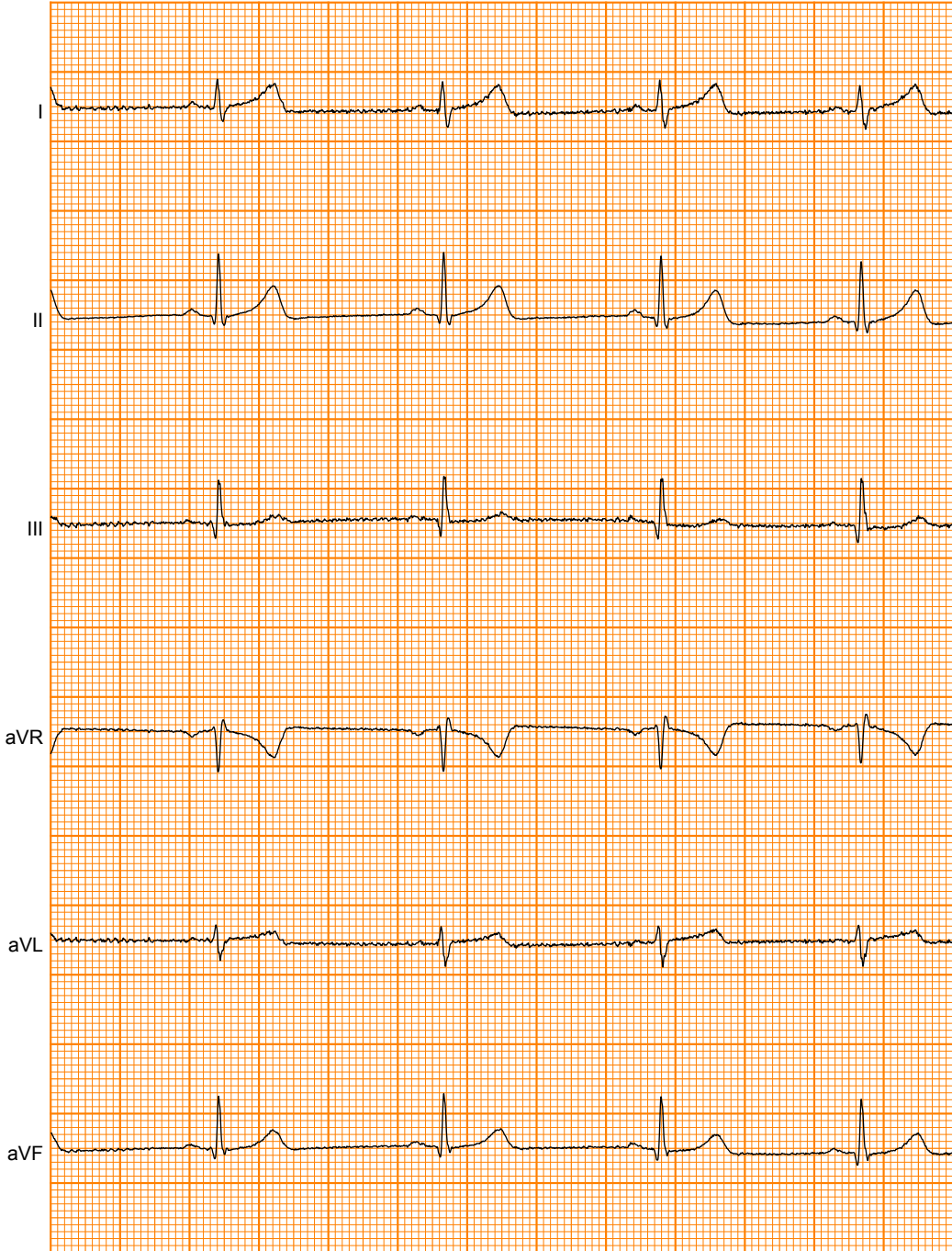


25mm/s 5mm/mV №245960

104 second 105 second 106 second 107 second 108 second 109 second

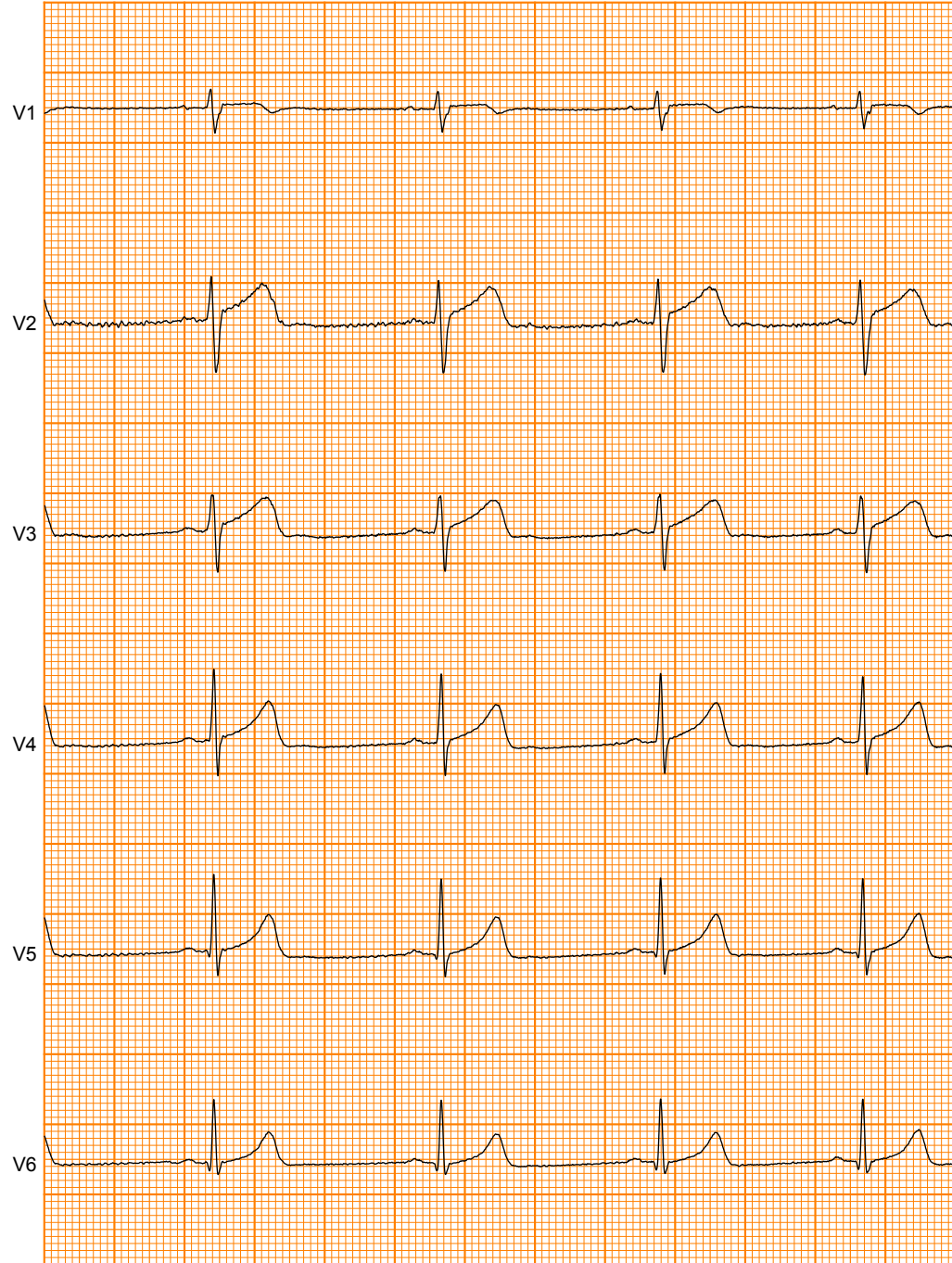


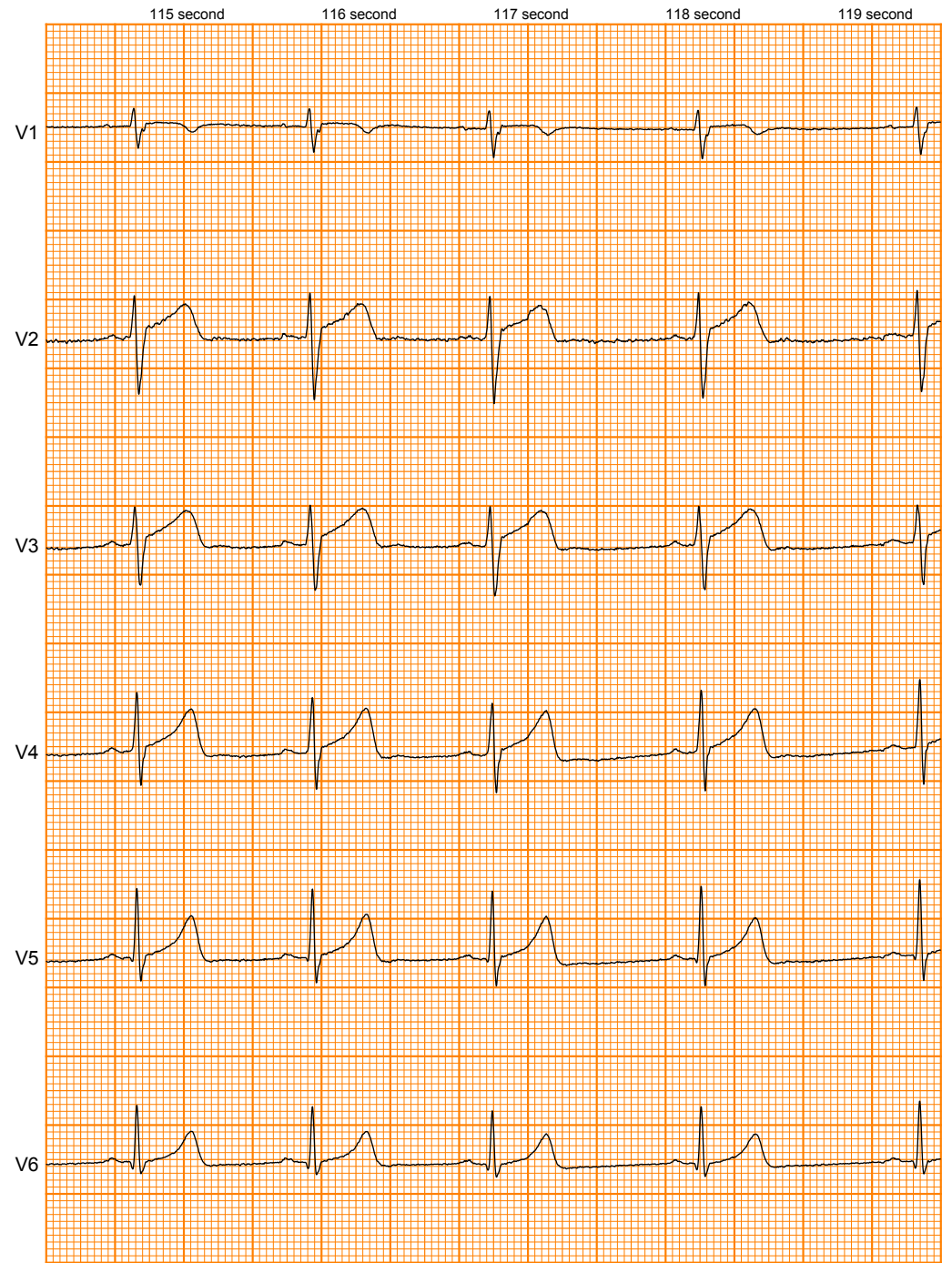
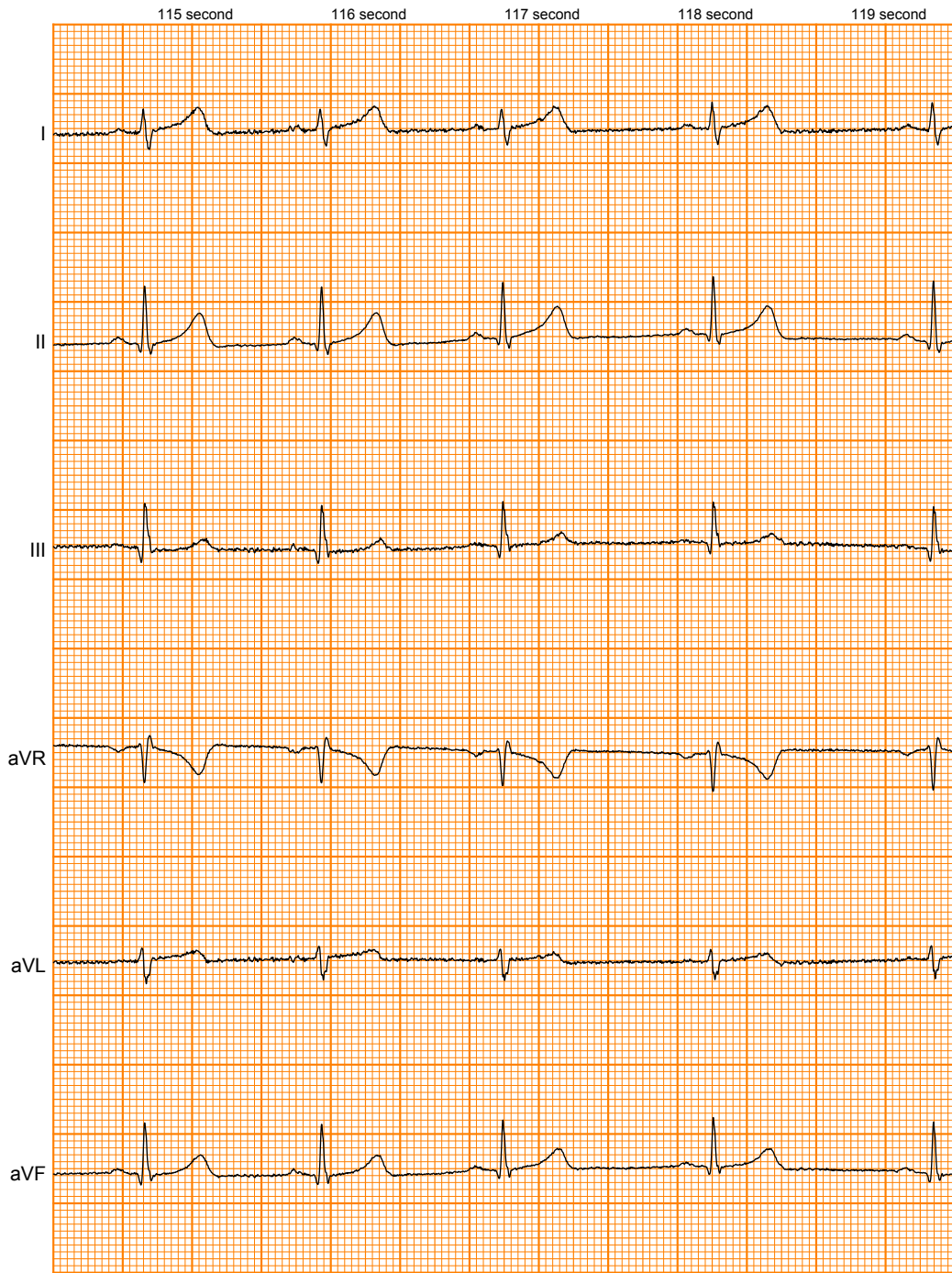
110 second 111 second 112 second 113 second 114 second



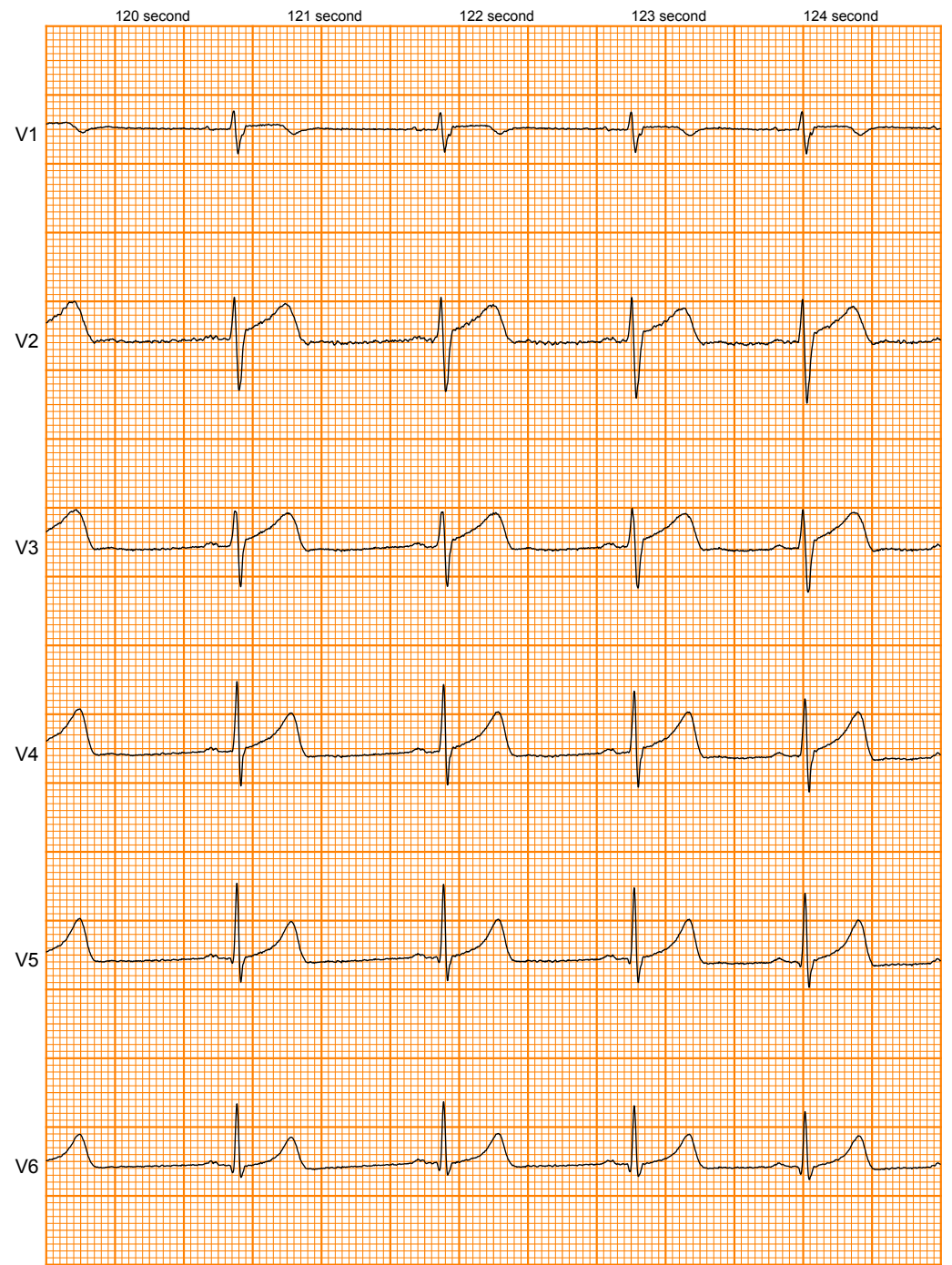
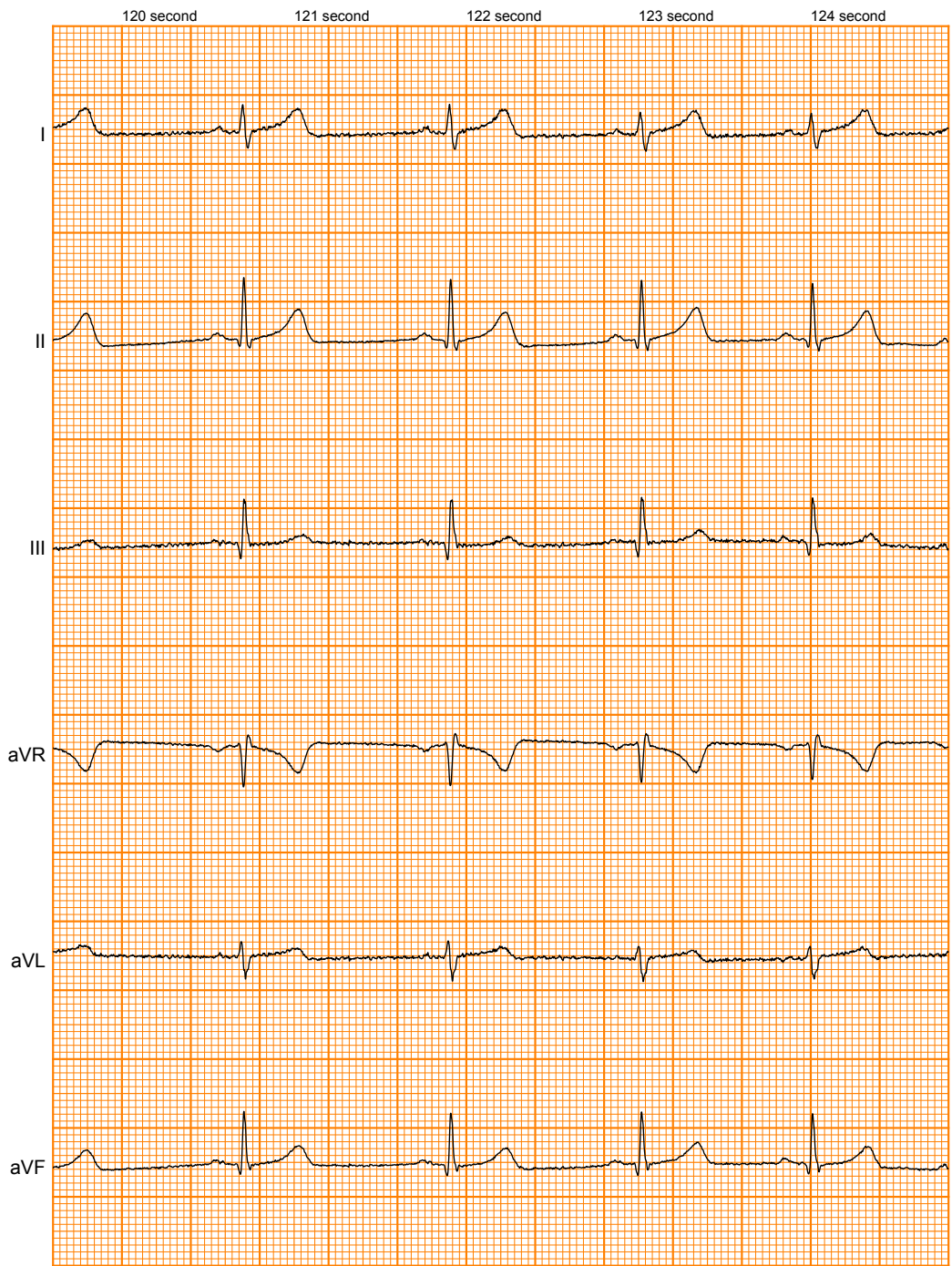
25mm/s 5mm/mV №245960

110 second 111 second 112 second 113 second 114 second

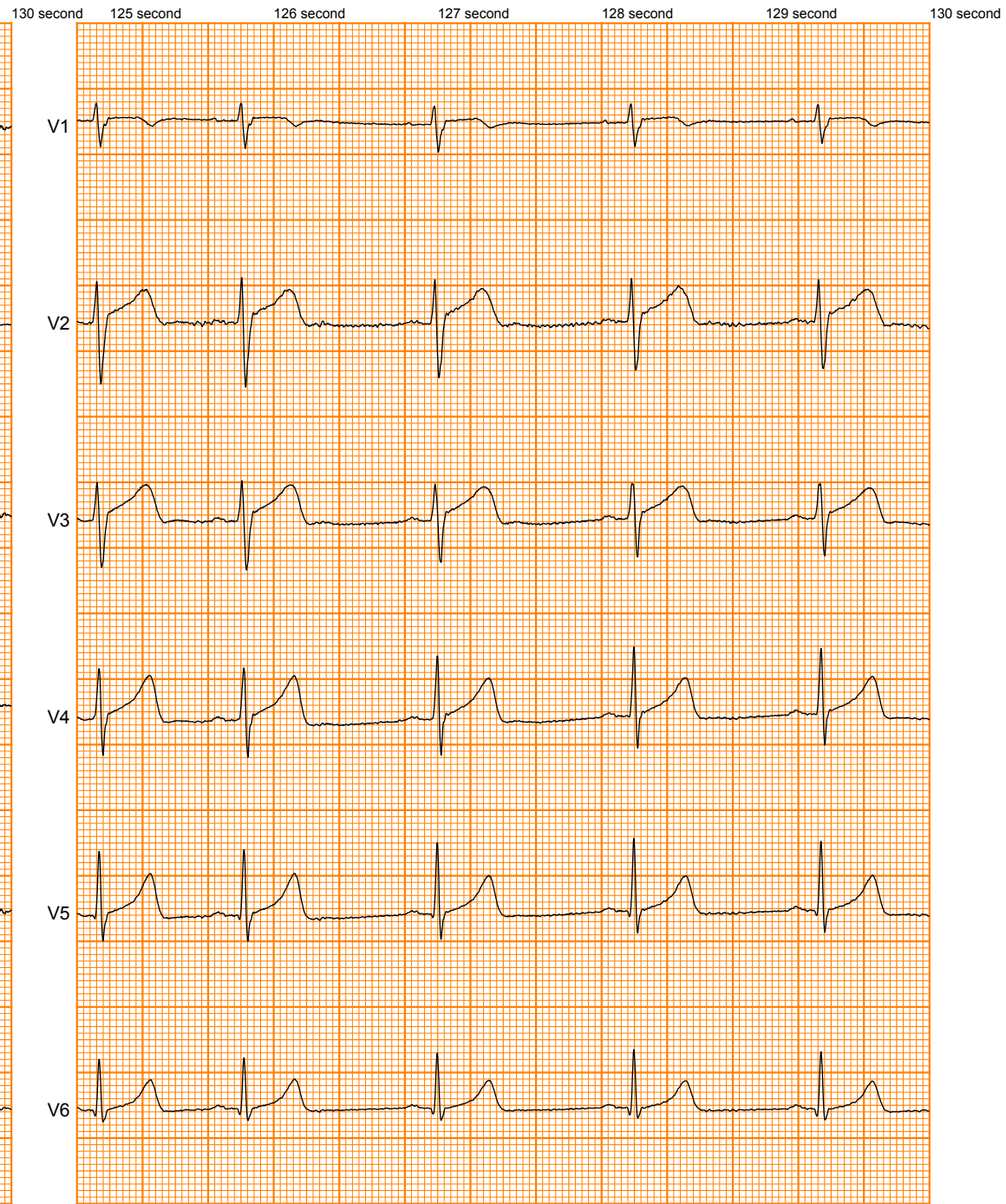
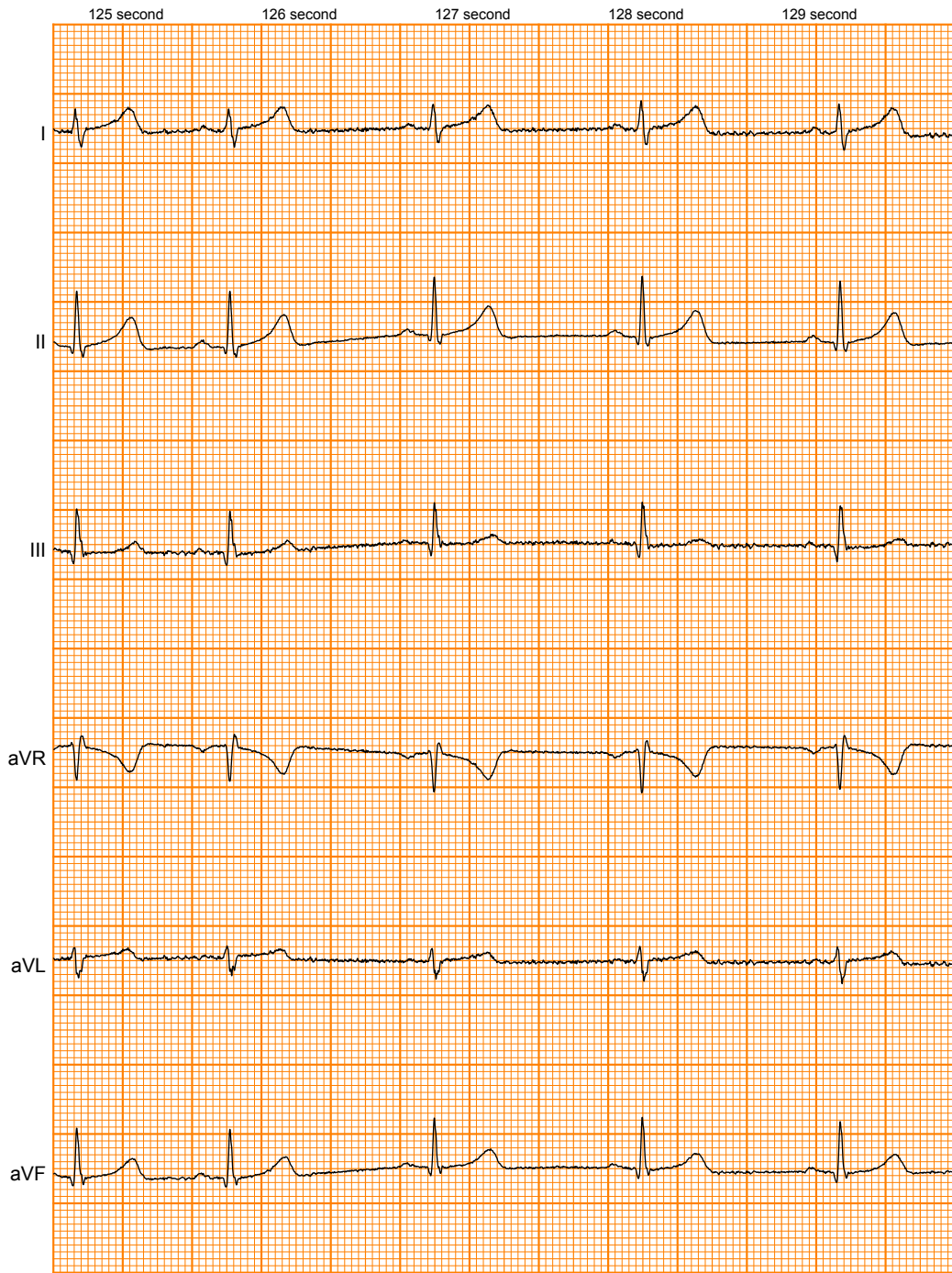




25mm/s 5mm/mV №245960

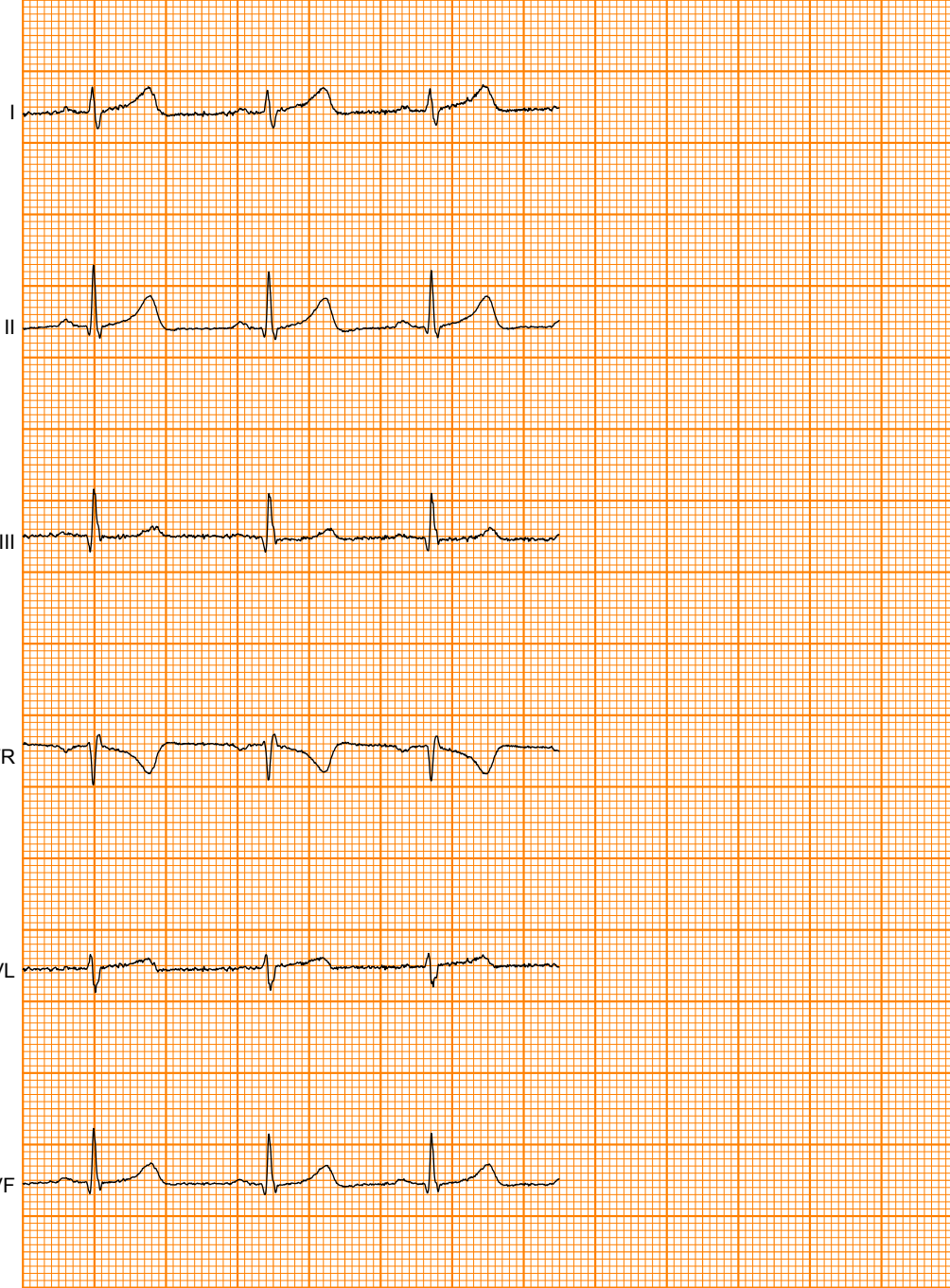


25mm/s 5mm/mV №245960



25mm/s 5mm/mV №245960

130 second 131 second 132 second 133 second 134 second 135 second



25mm/s 5mm/mV №245960

130 second 131 second 132 second 133 second 134 second 135 second

